

La miglior soluzione per finestre a filo muro

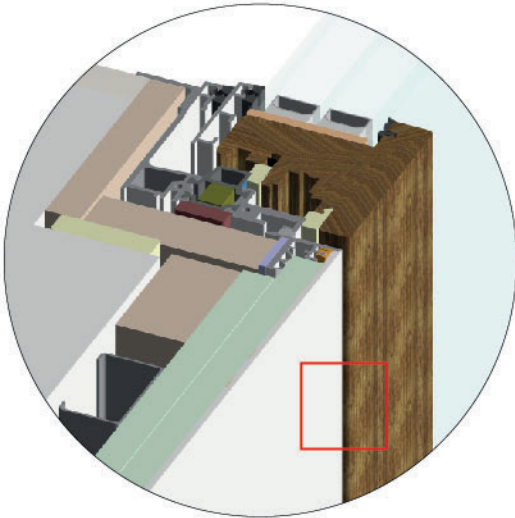
The best solution for installing hinged windows flush with walls

- Telaio infisso a scomparsa
Invisible window frame
- Telaio infisso removibile
Removable window frame
- Anta perfettamente complanare al muro
The wing of the window is perfectly flush to the wall
- Ingombro contenuto
Limited space required
- Nessun utensile dedicato - Profilatura anta standard
No special tool required - The geometry is standard

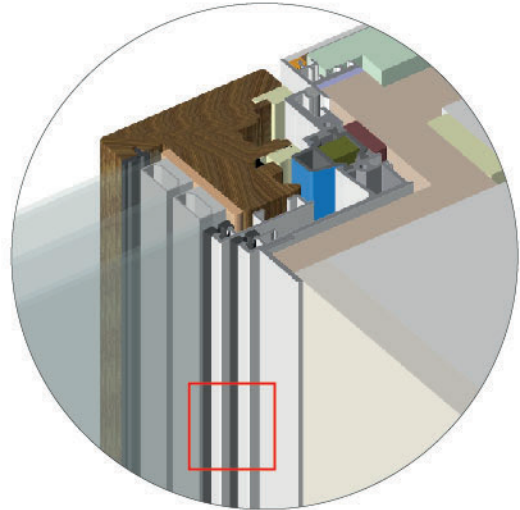


CE marking available
by **cascading**

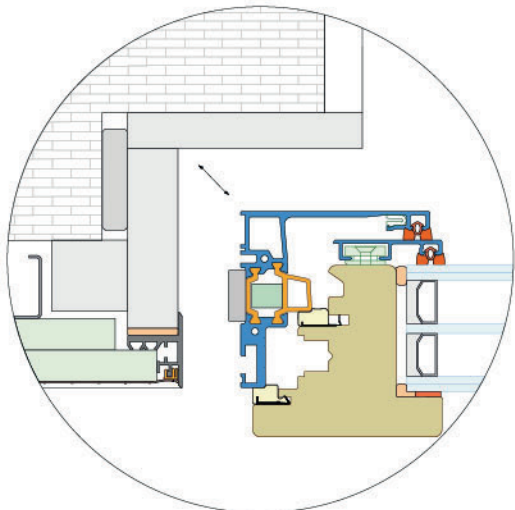
Filo parete perfetto
Flush with the wall



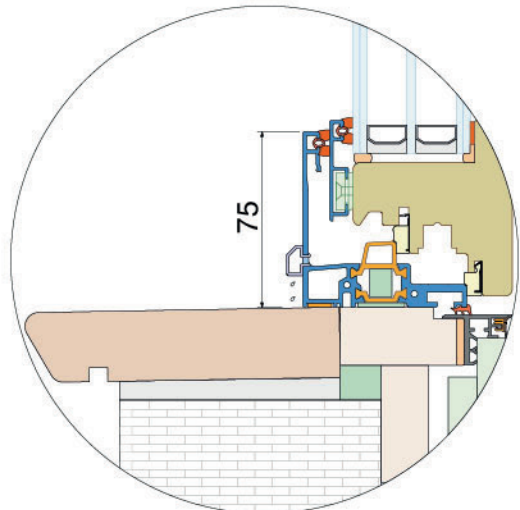
Maggior quantità di luce
Lets in more light



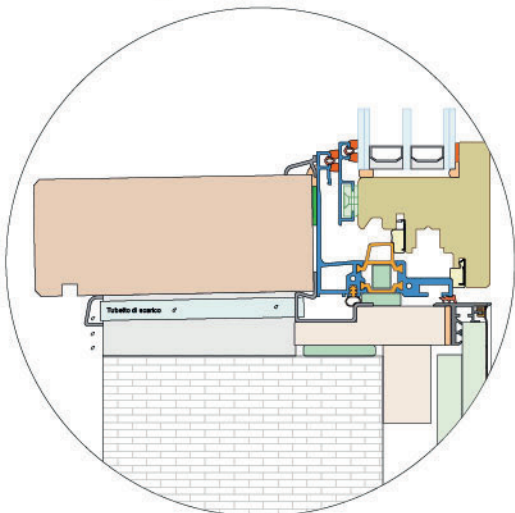
Telaio infisso removibile
Removable window frame



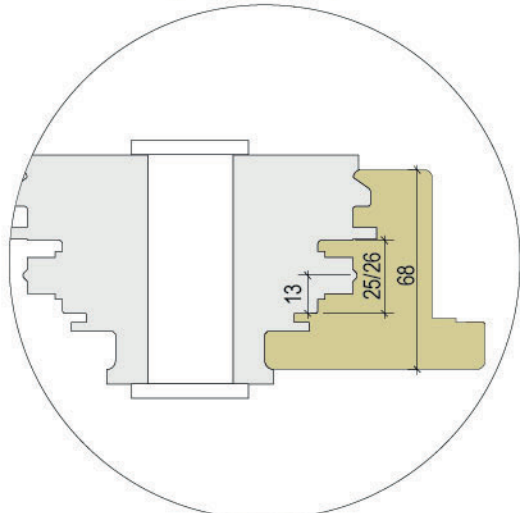
Ingombro contenuto
Limited space required



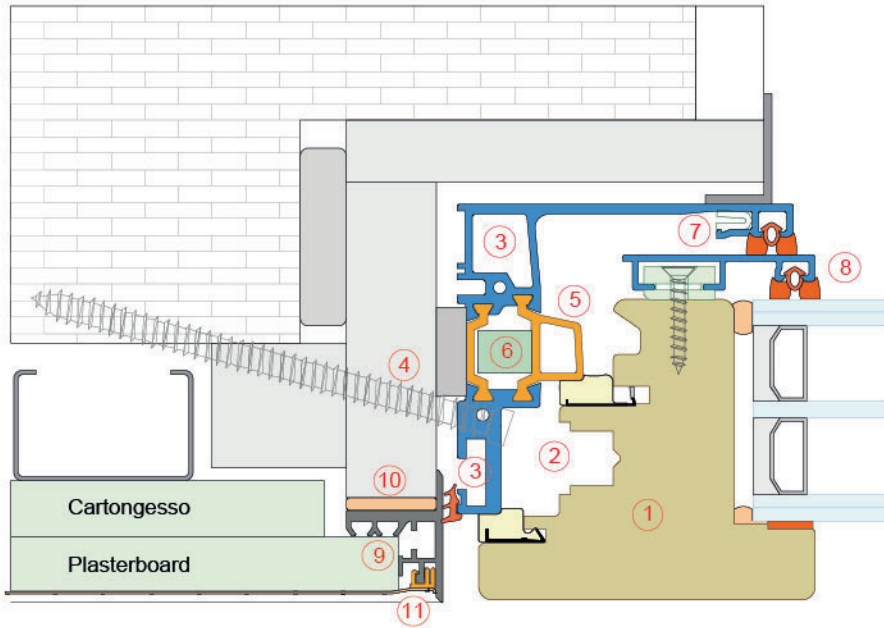
Totalmente a scomparsa
Fully concealed



Squadatura anta standard
No special tool required

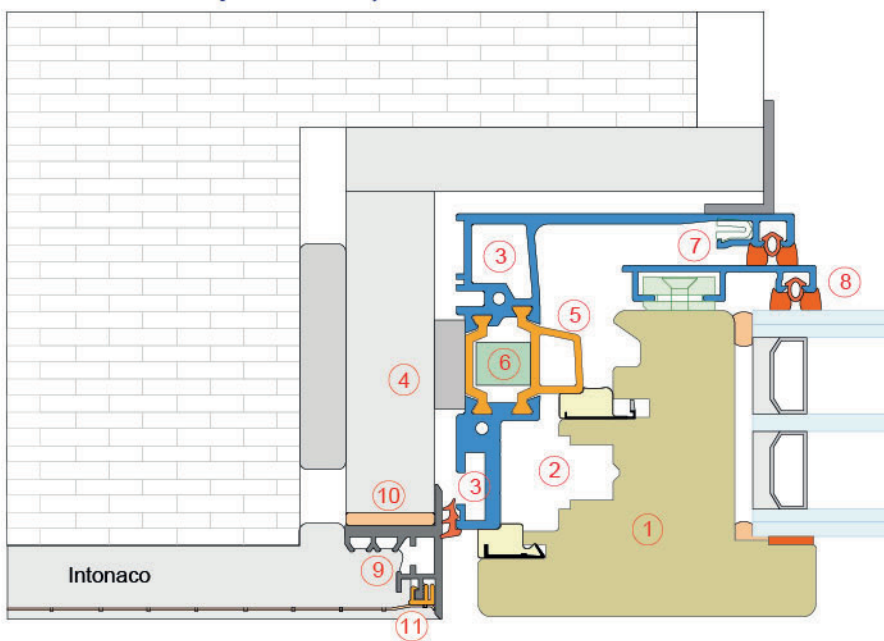


Per sistemi a secco
For drywall



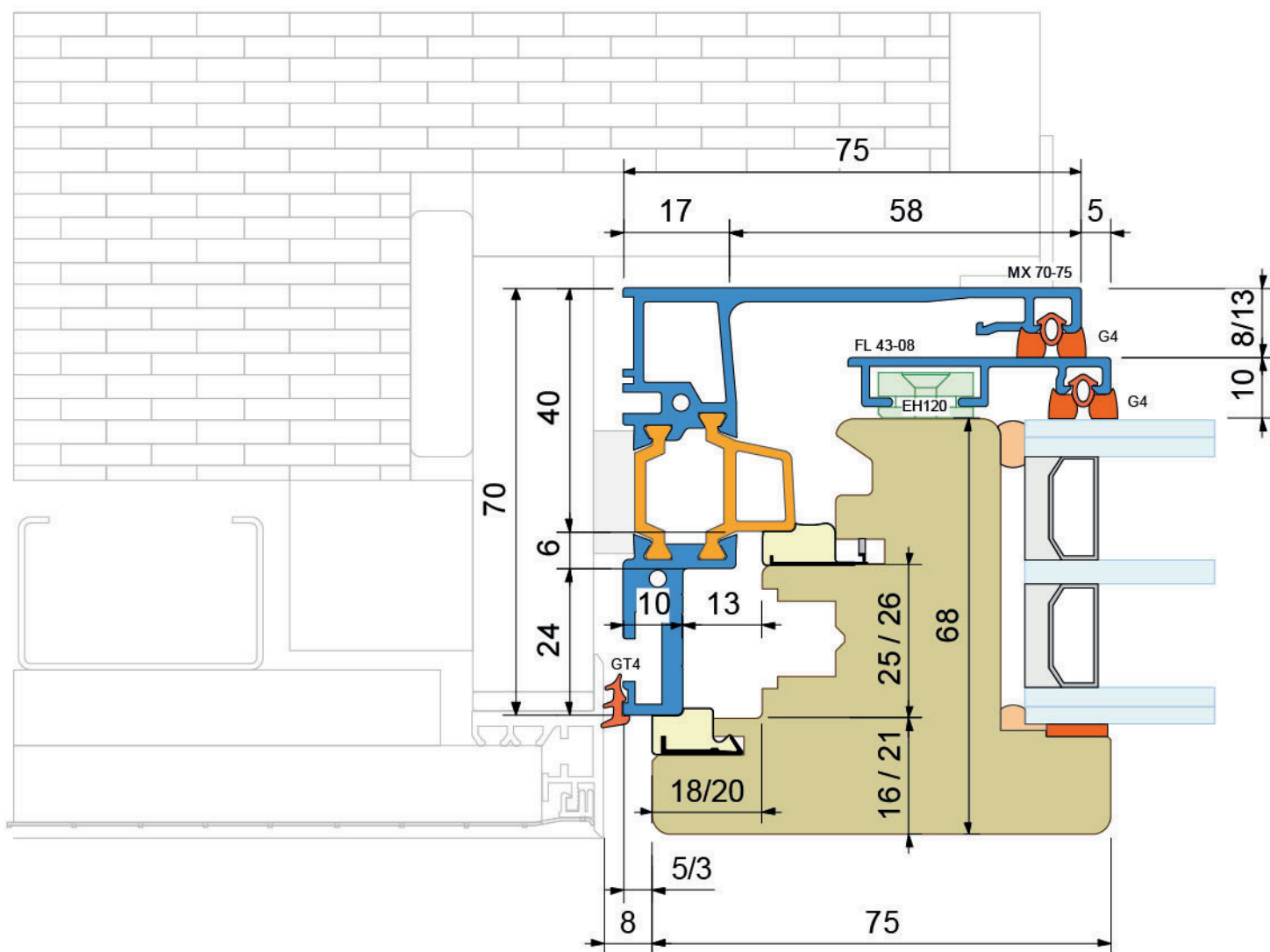
- ① Profilatura anta standard
No special tool required
- ② Ferramenta a scomparsa asse 13
Concealed hardware axis 13
- ③ Assemblaggio rapido con quadrette a bottone
Corner joint with spring loaded buttons
- ④ Il profilo prevede l'alloggiamento della vite di fissaggio
The profile involves the insertion of fixing screw
- ⑤ Profili verniciabili in poliammide per un buon isolamento termico
Paintable polyamide profiles for good thermal insulation
- ⑥ Profili in PE per ottimizzare l'isolamento termico
PE profiles to maximize the thermal insulation
- ⑦ Squadretta di allineamento
Corner joint for alignment
- ⑧ Profilo anta giuntabile con taglio a 45° o 90°
The shutter profile can be joined at 45° or 90°
- ⑨ Profilo per il supporto del cartongesso/intonaco
Profile for the support of plasterboard/plaster
- ⑩ Nastro biadesivo per lo smorzamento delle vibrazioni
Double-sided tape for vibration damping
- ⑪ Rete antifessurazione in fibra di vetro
Anti-cracking fiber glass mesh

Per sistemi tradizionali ad intonaco
For traditional system with plaster

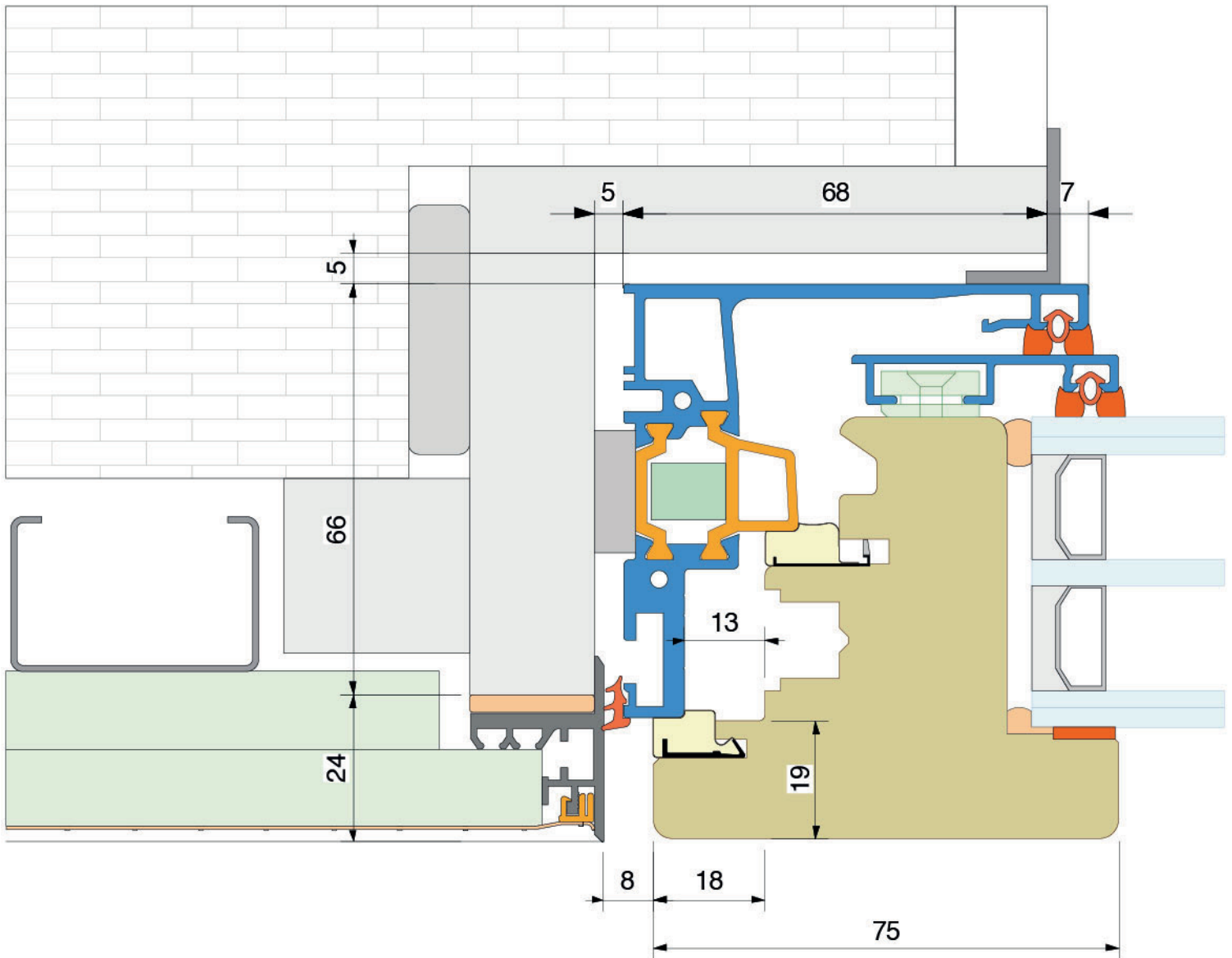


Performance

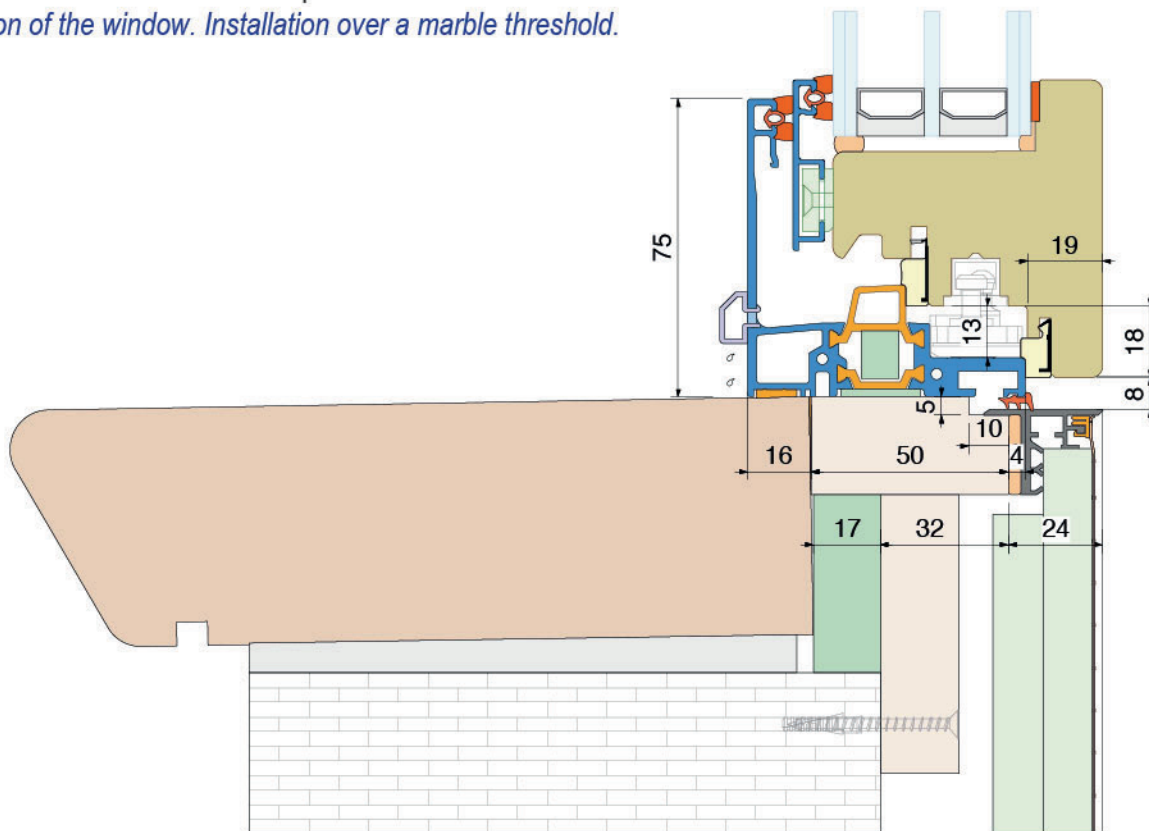
	Finestra <i>Window</i>	Portafinestra <i>French window</i>		Legno tenero <i>Soft wood</i>	Legno duro <i>Hard wood</i>
Permeabilità all'aria <i>Air permeability</i>	4	4	Isolamento termico <i>Thermal insulation</i> Uf [W/m ² K]	1,33	1,57
Tenuta all'acqua <i>Water tightness</i>	9A	8A			
Resistenza al vento <i>Resistance to wind</i>	C5	C4			



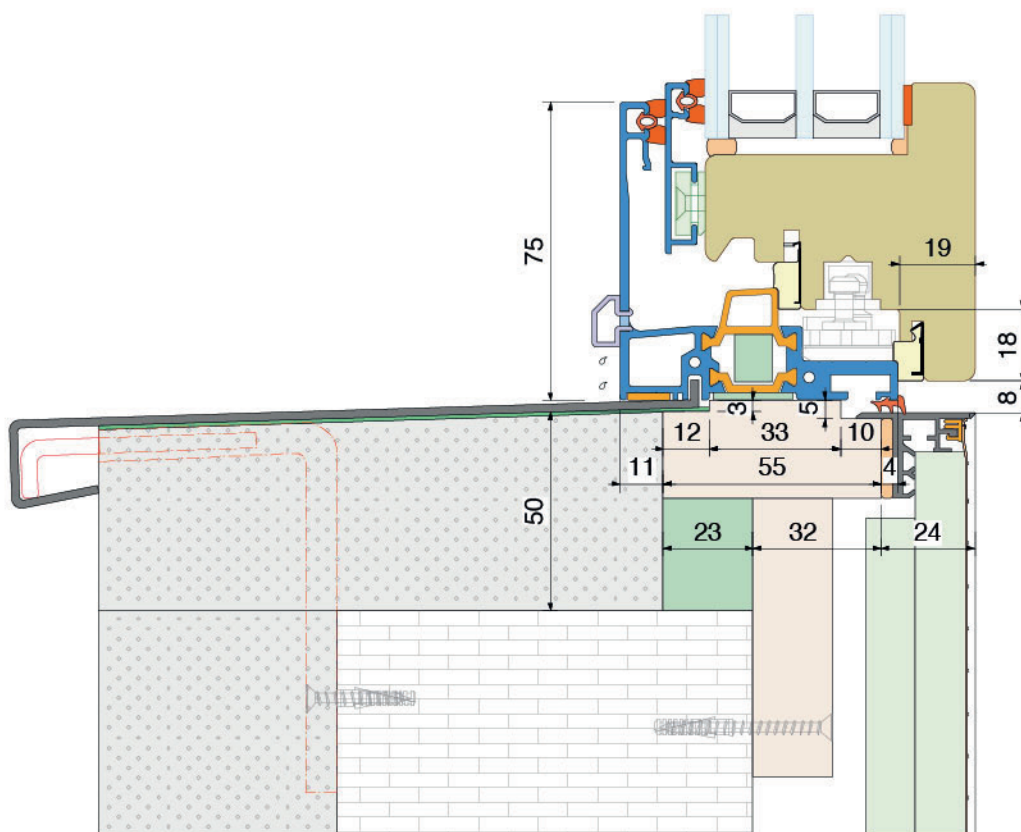
Sezione del montante laterale
Section of the lateral jamb



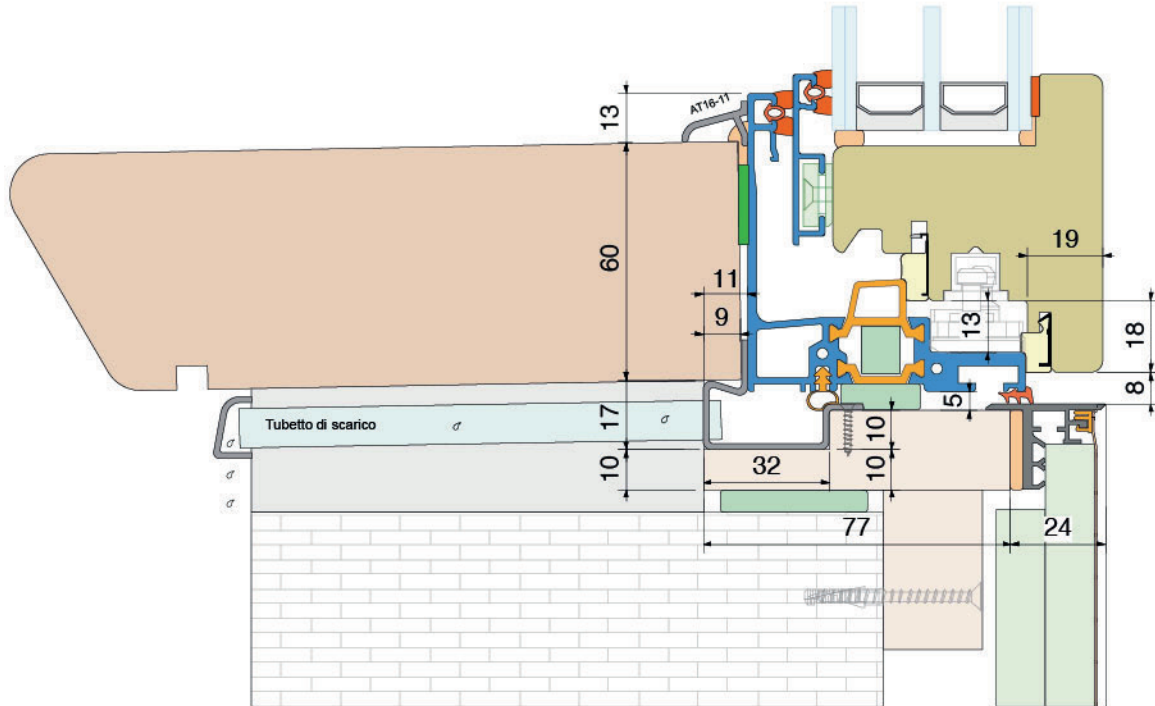
Nodo inferiore finestra. Installazione sopra il davanzale in marmo.
Bottom section of the window. Installation over a marble threshold.



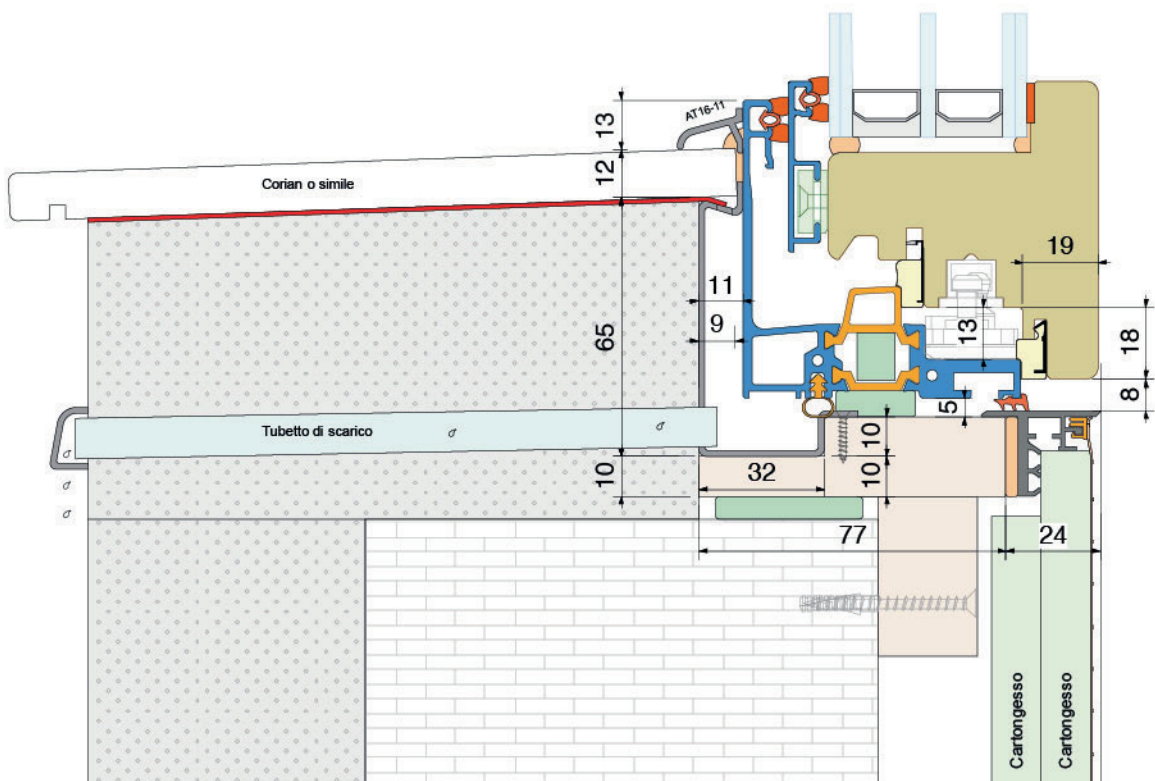
Nodo inferiore finestra. Installazione sopra il davanzale in alluminio.
Bottom section of the window. Installation over an aluminium threshold.



Nodo inferiore finestra con davanzale in marmo. Installazione a scomparsa.
Bottom section of the window with marble threshold. Concealed installation.



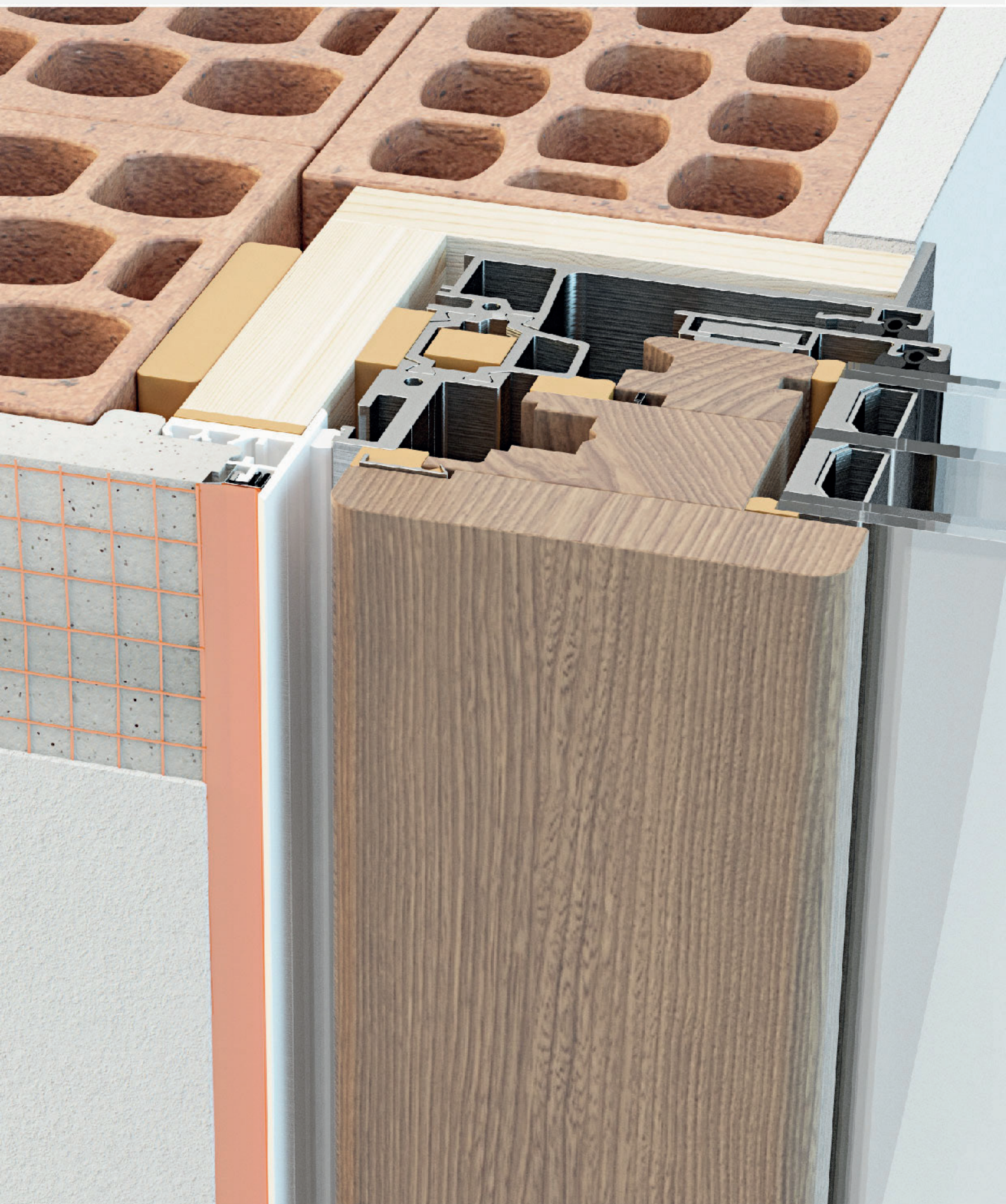
Nodo inferiore finestra con davanzale in Corian. Installazione a scomparsa.
Bottom section of the window with Corian threshold. Concealed installation.



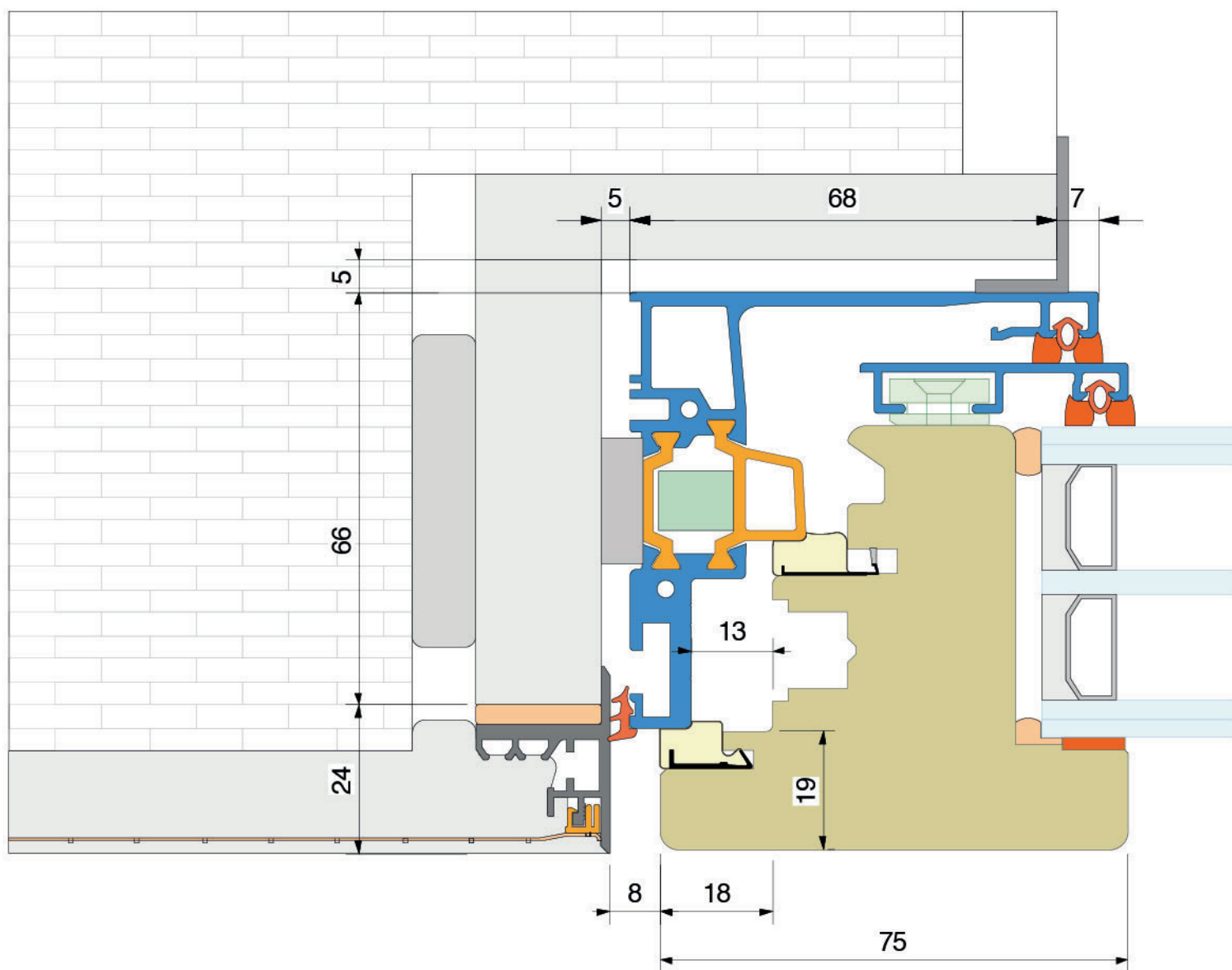
Filo muro con sistema tradizionale ad intonaco
Flush with plaster

Mix

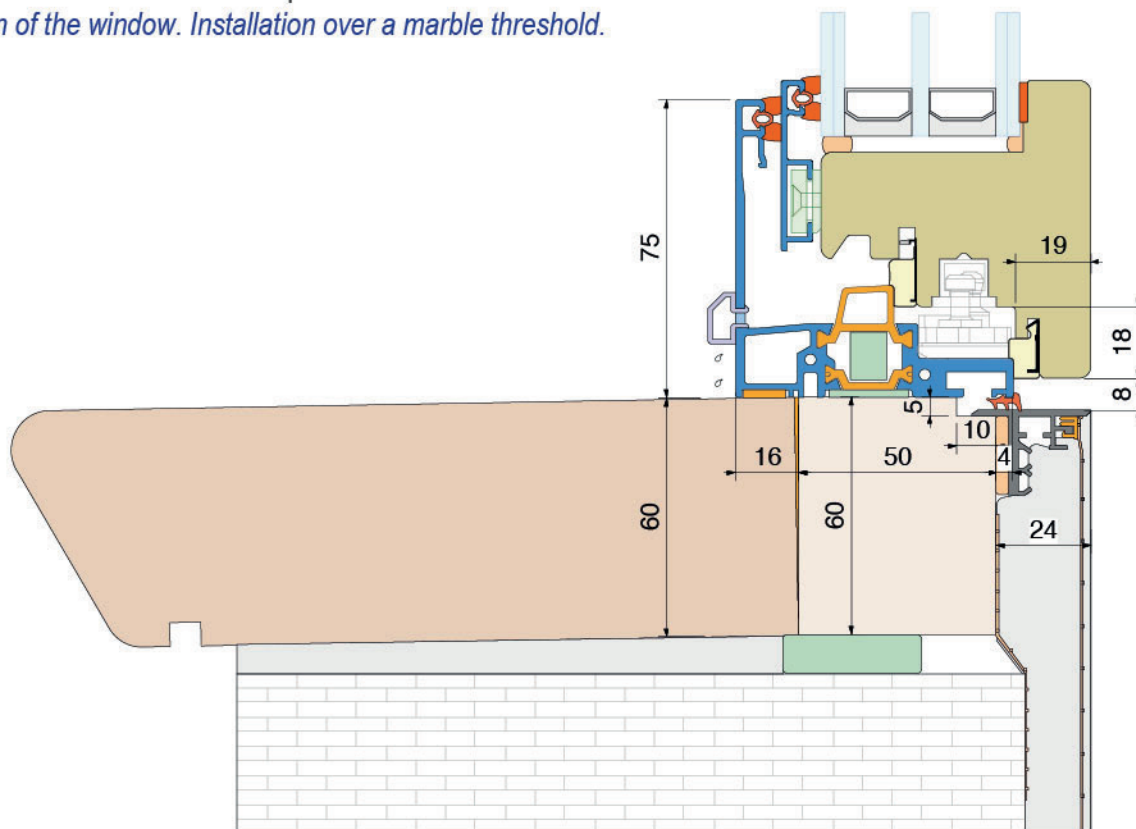
68 Invisible



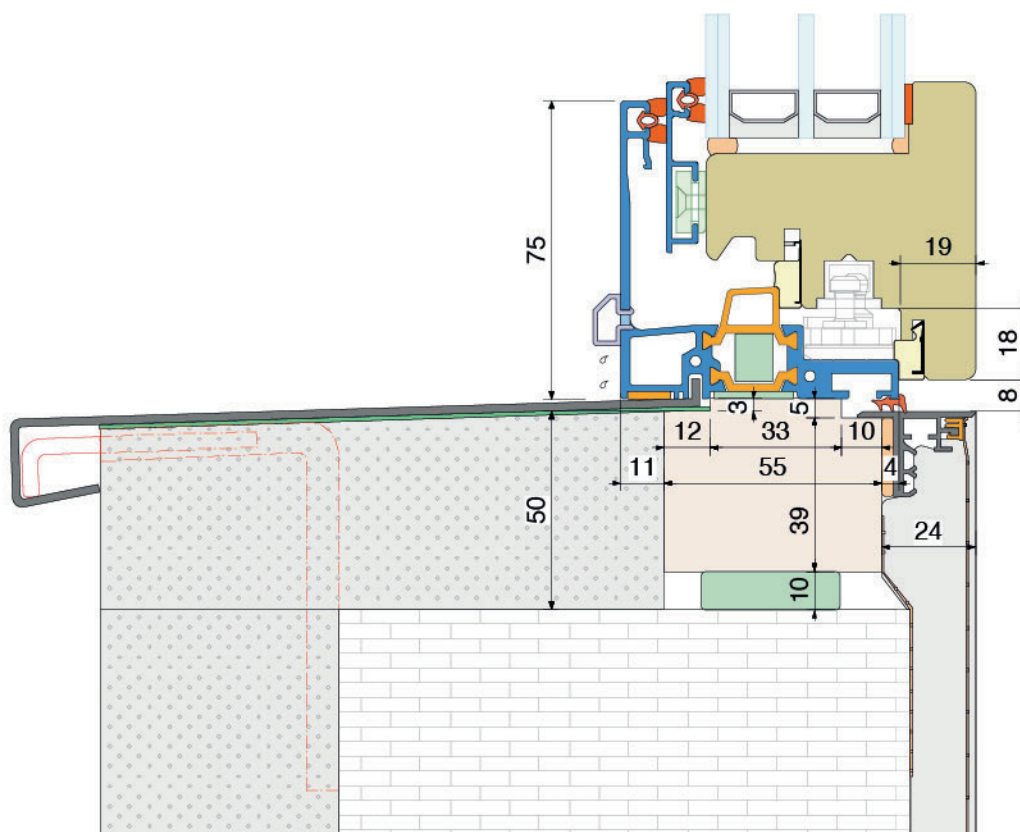
Sezione del montante laterale
Section of the lateral jamb



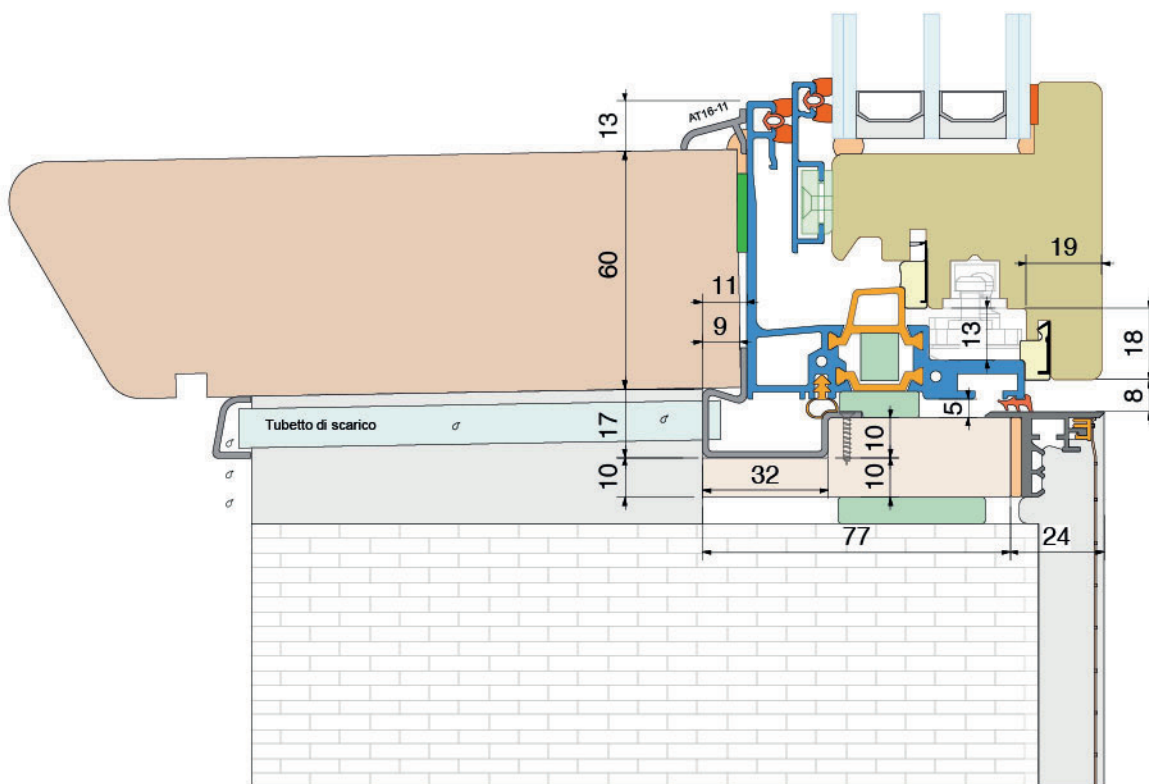
Nodo inferiore finestra. Installazione sopra il davanzale in marmo.
Bottom section of the window. Installation over a marble threshold.



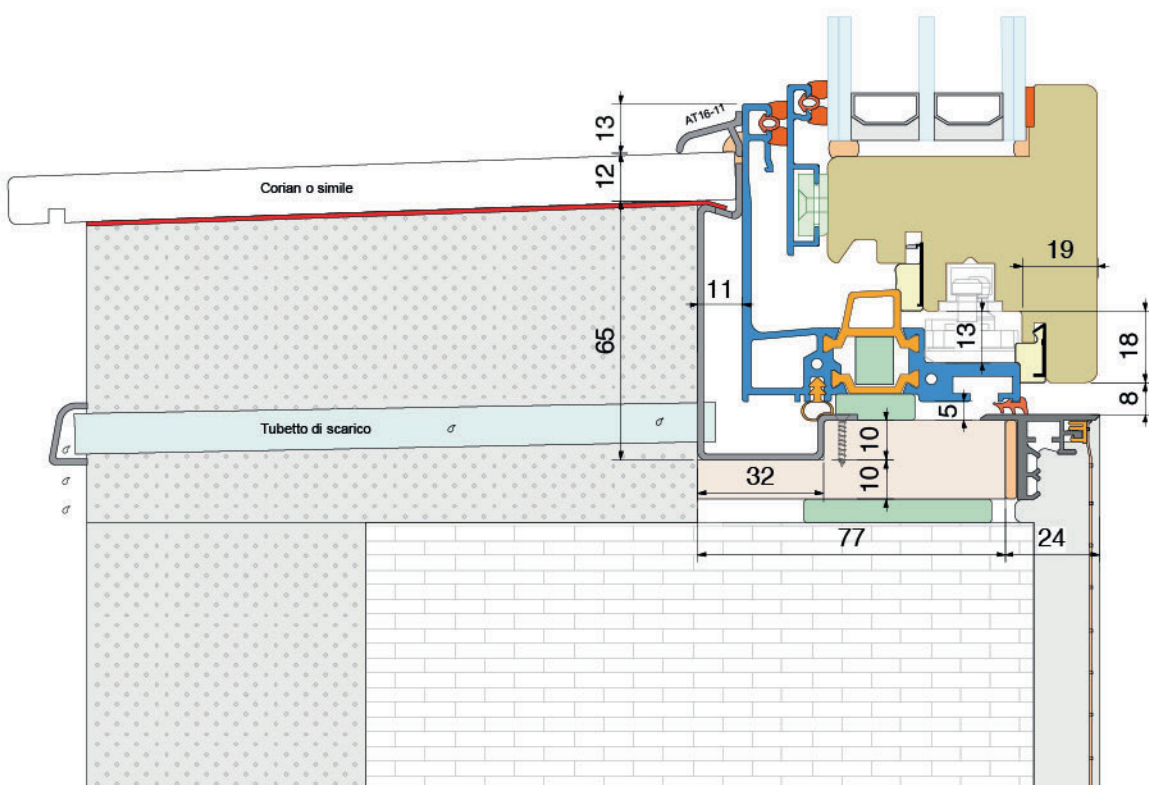
Nodo inferiore finestra. Installazione sopra il davanzale in alluminio.
Bottom section of the window. Installation over an aluminium threshold.



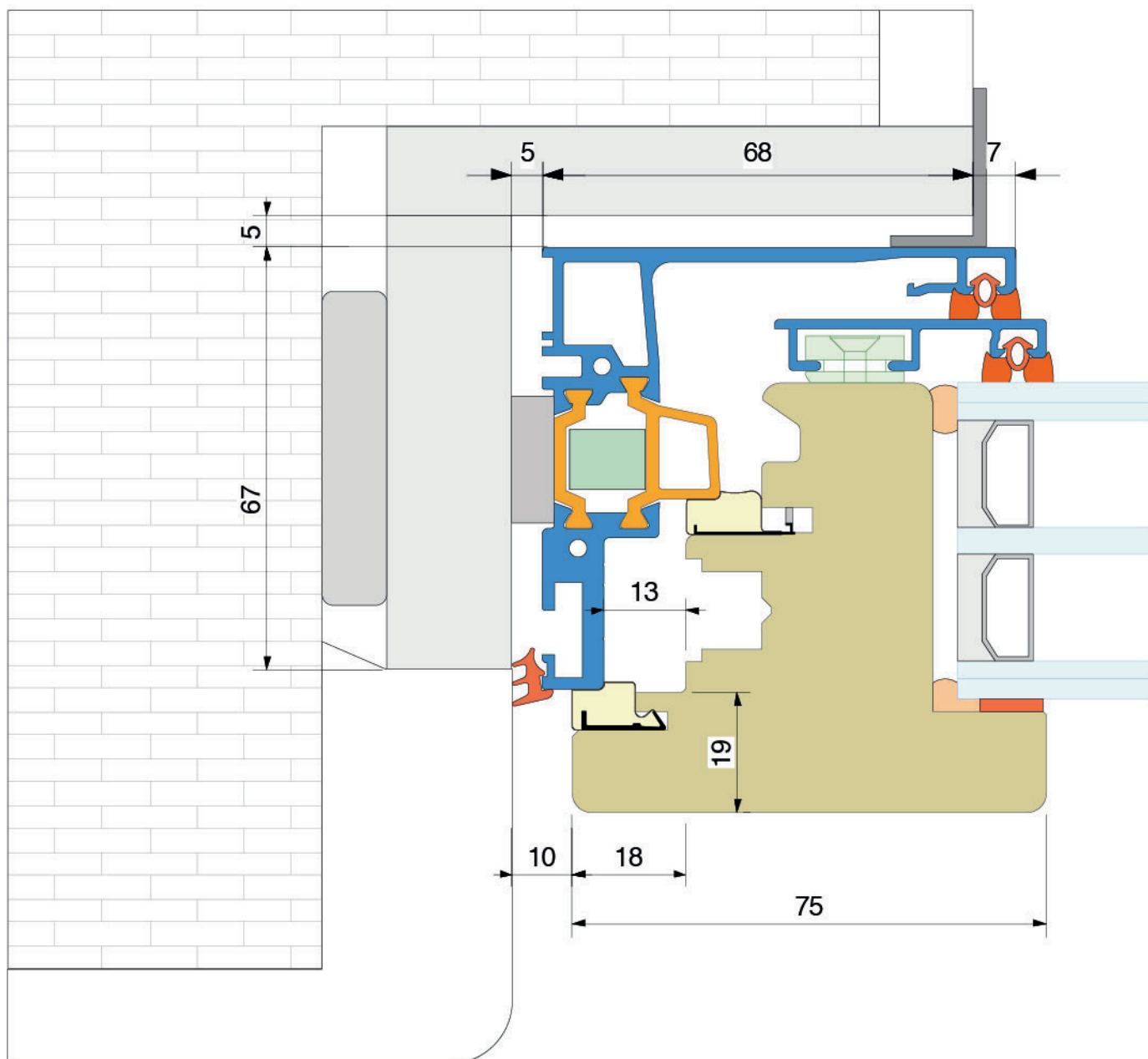
Nodo inferiore finestra con davanzale in marmo. Installazione a scomparsa.
Bottom section of the window with marble threshold. Concealed installation.



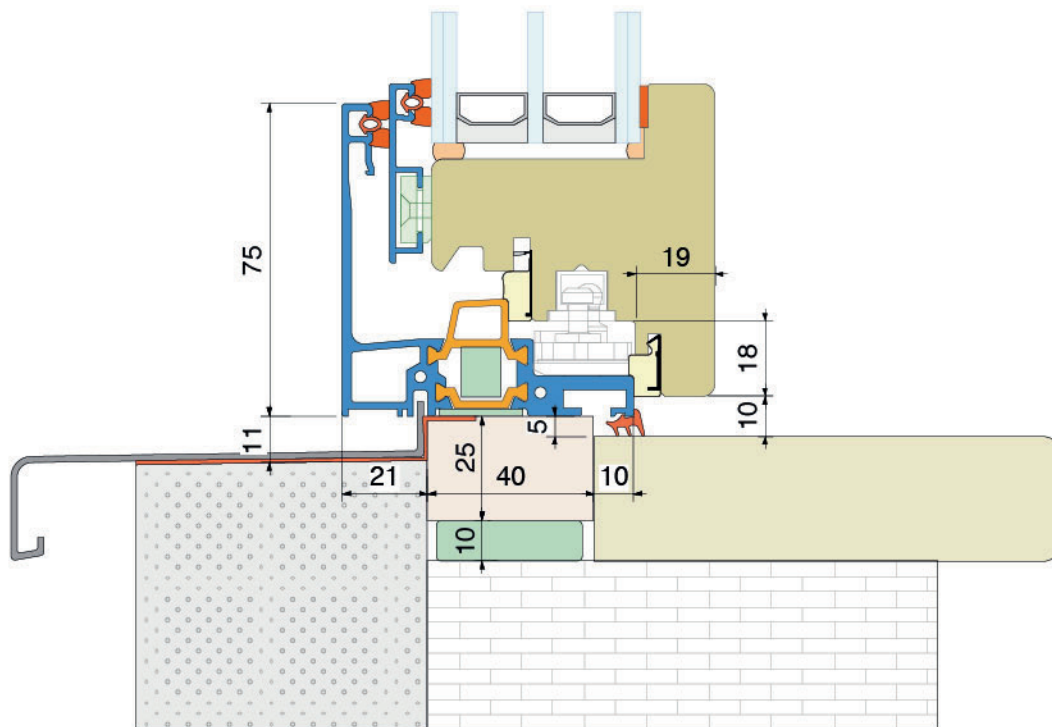
Nodo inferiore finestra con davanzale in Corian. Installazione a scomparsa.
Bottom section of the window with Corian threshold. Concealed installation.



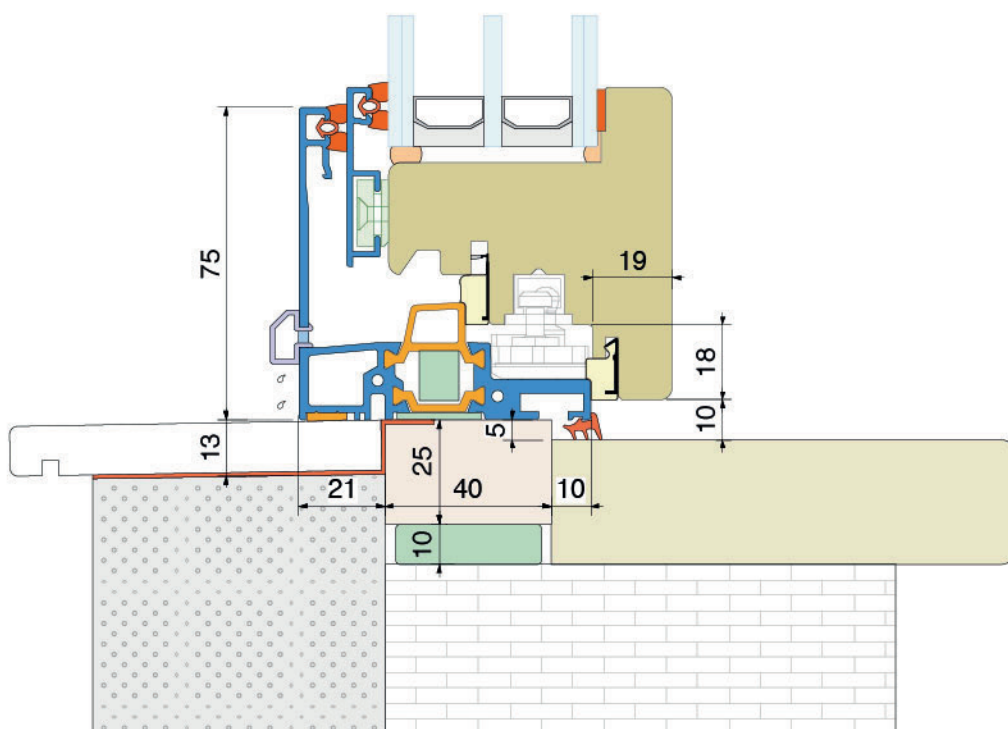
Sezione del montante laterale
Section of the lateral jamb



Nodo inferiore finestra. Installazione sopra il davanzale in alluminio.
Bottom section of the window. Installation over an aluminium threshold.

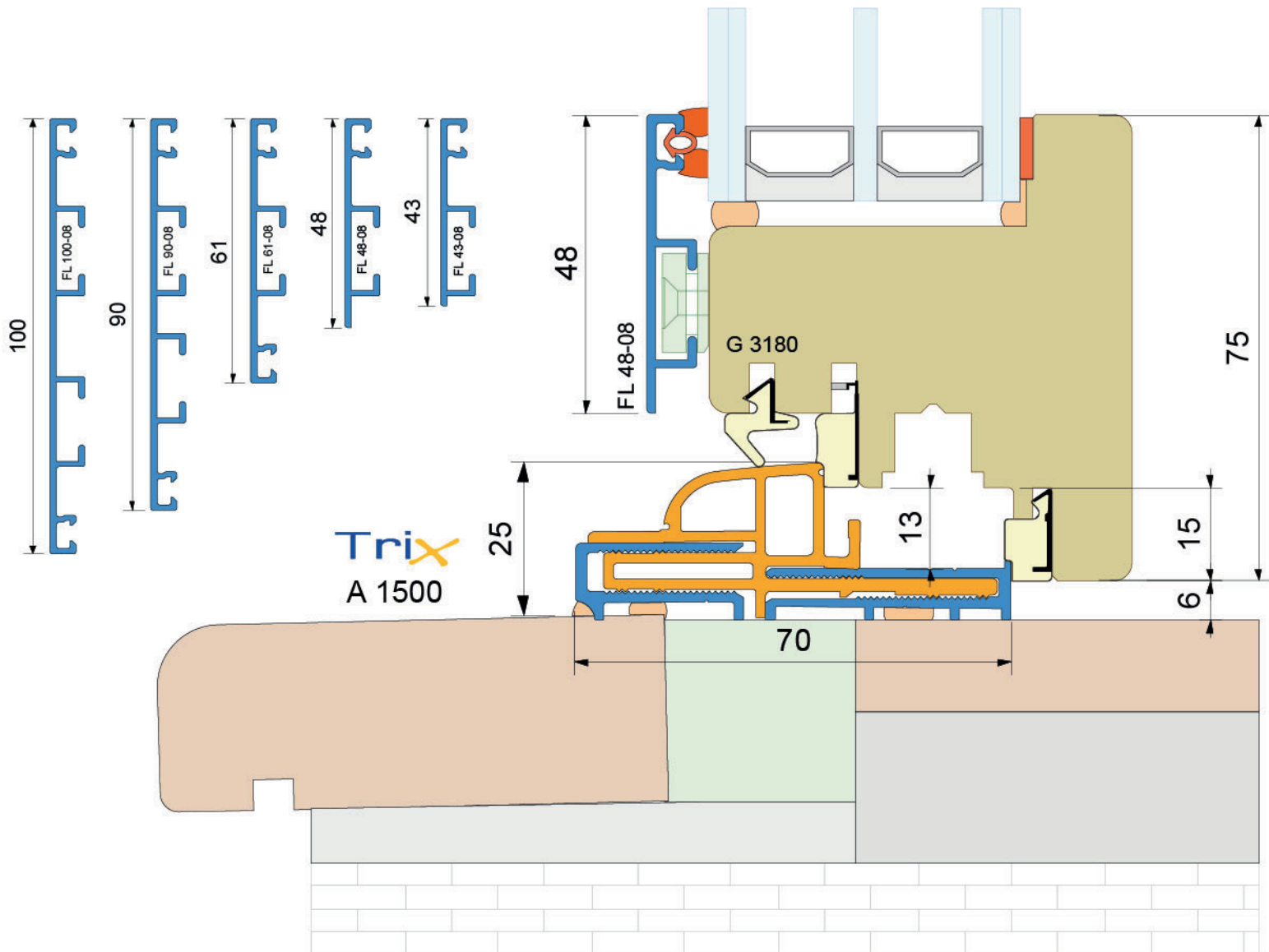
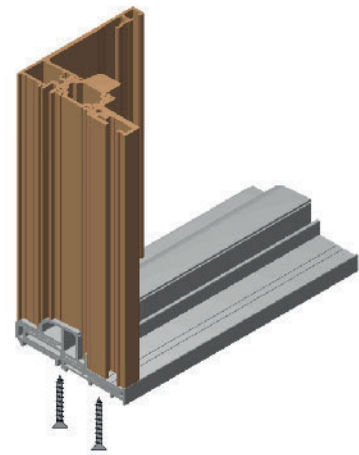
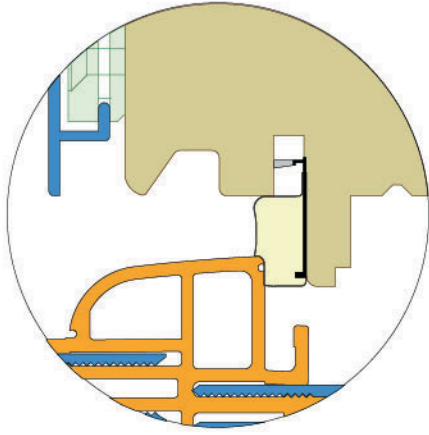


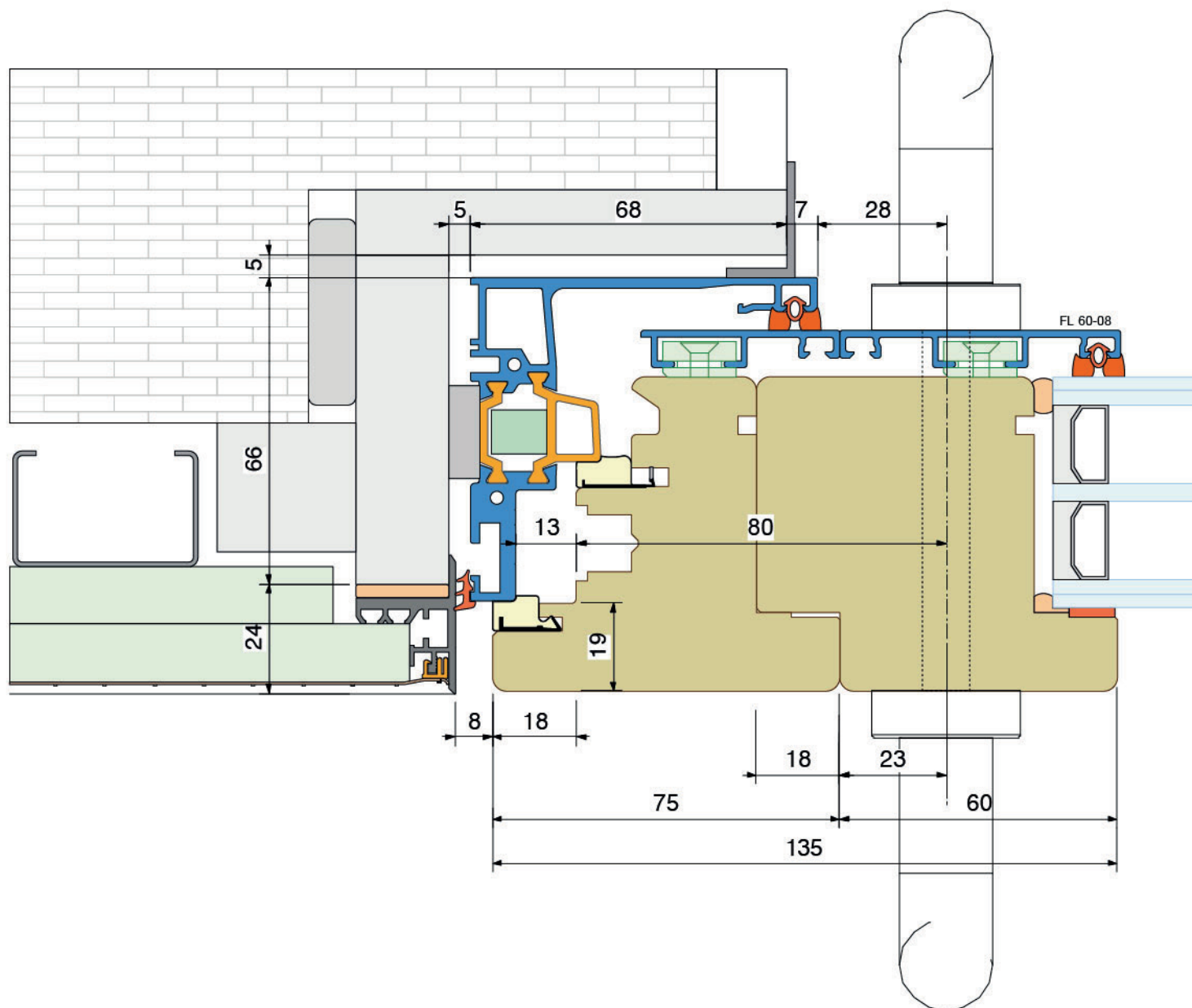
Nodo inferiore finestra. Installazione sopra il davanzale in Corian.
Bottom section of the window. Installation over a Corian threshold.

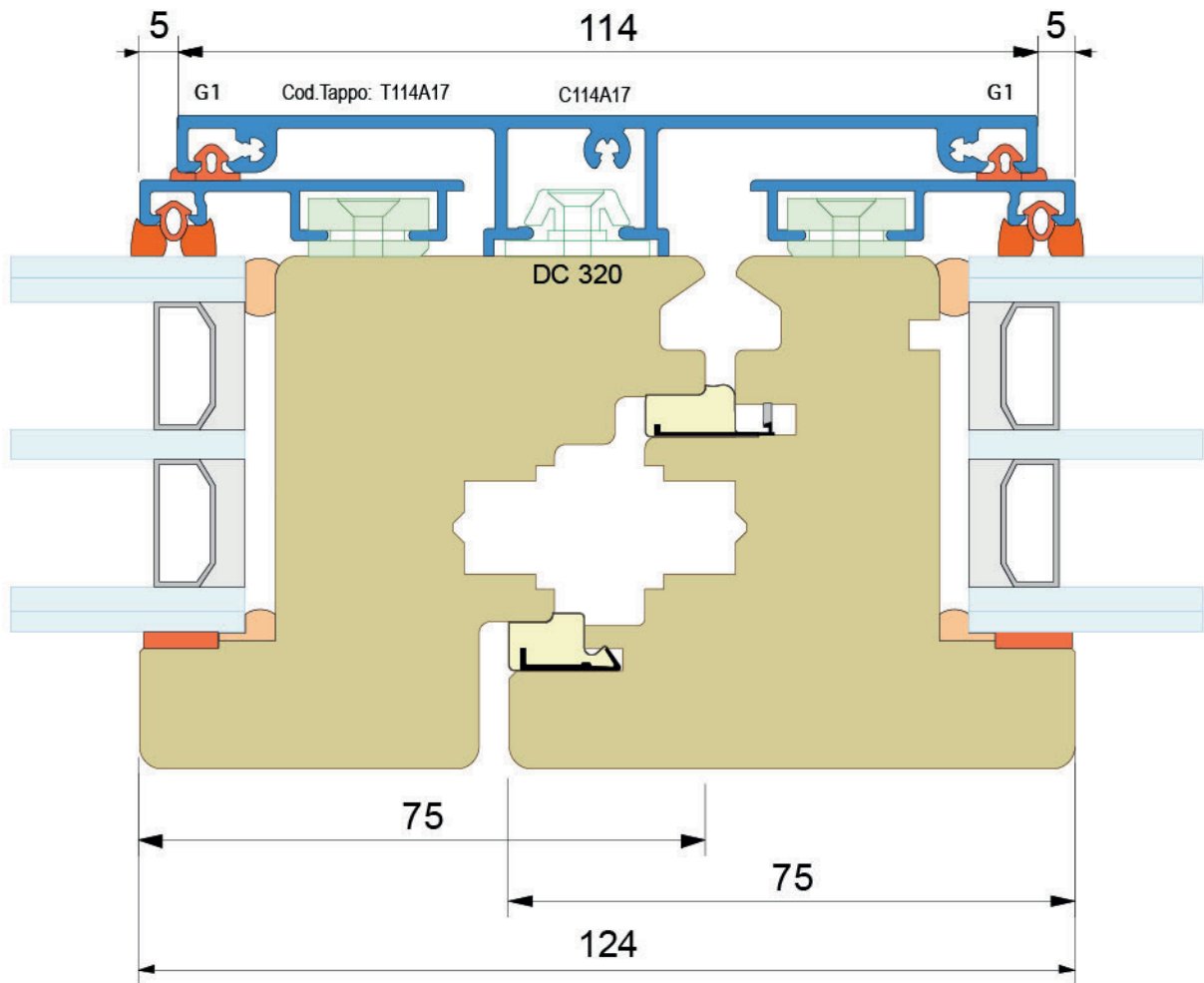


Nodo inferiore portafinestra
Bottom section of french door

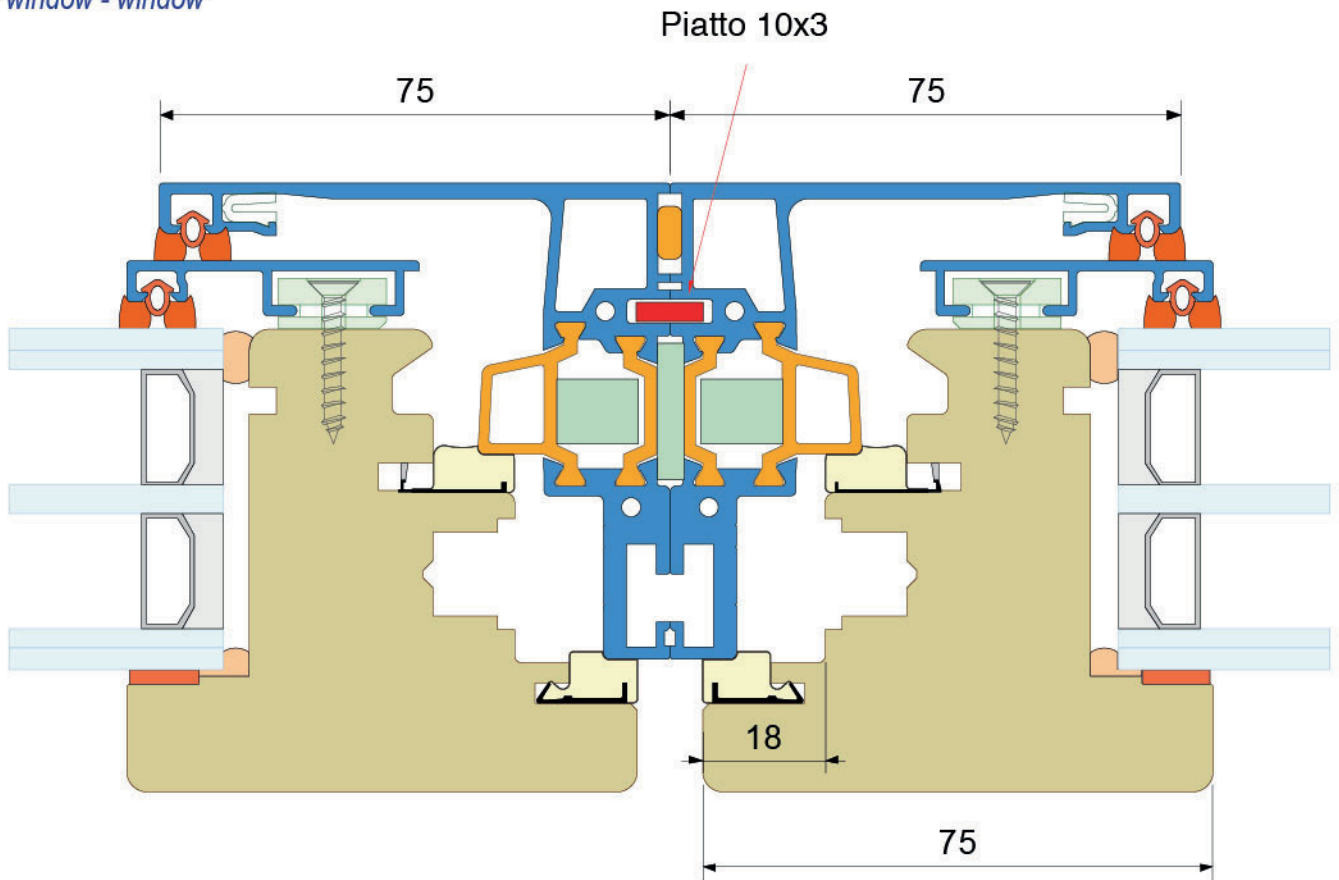
Soluzione senza guarnizione aggiuntiva
Solution without added seal
 Tenuta all'acqua *Water tightness = 6A*



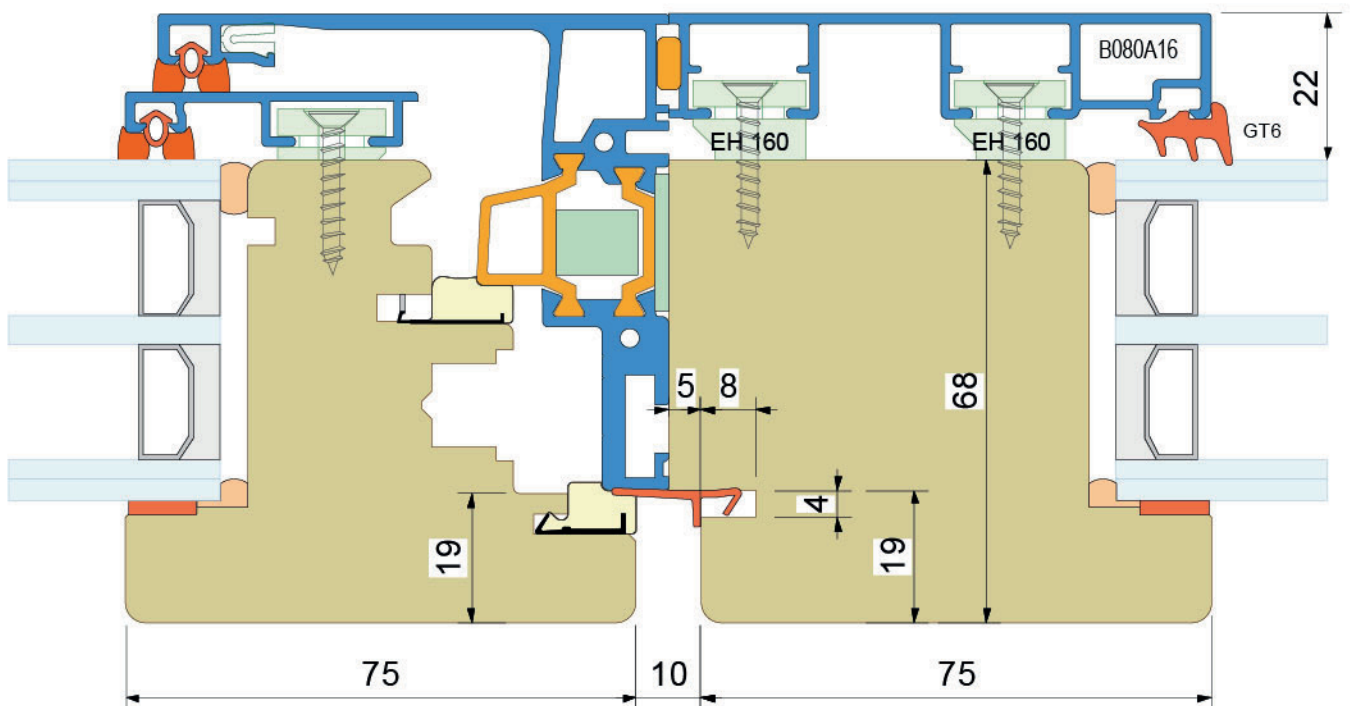


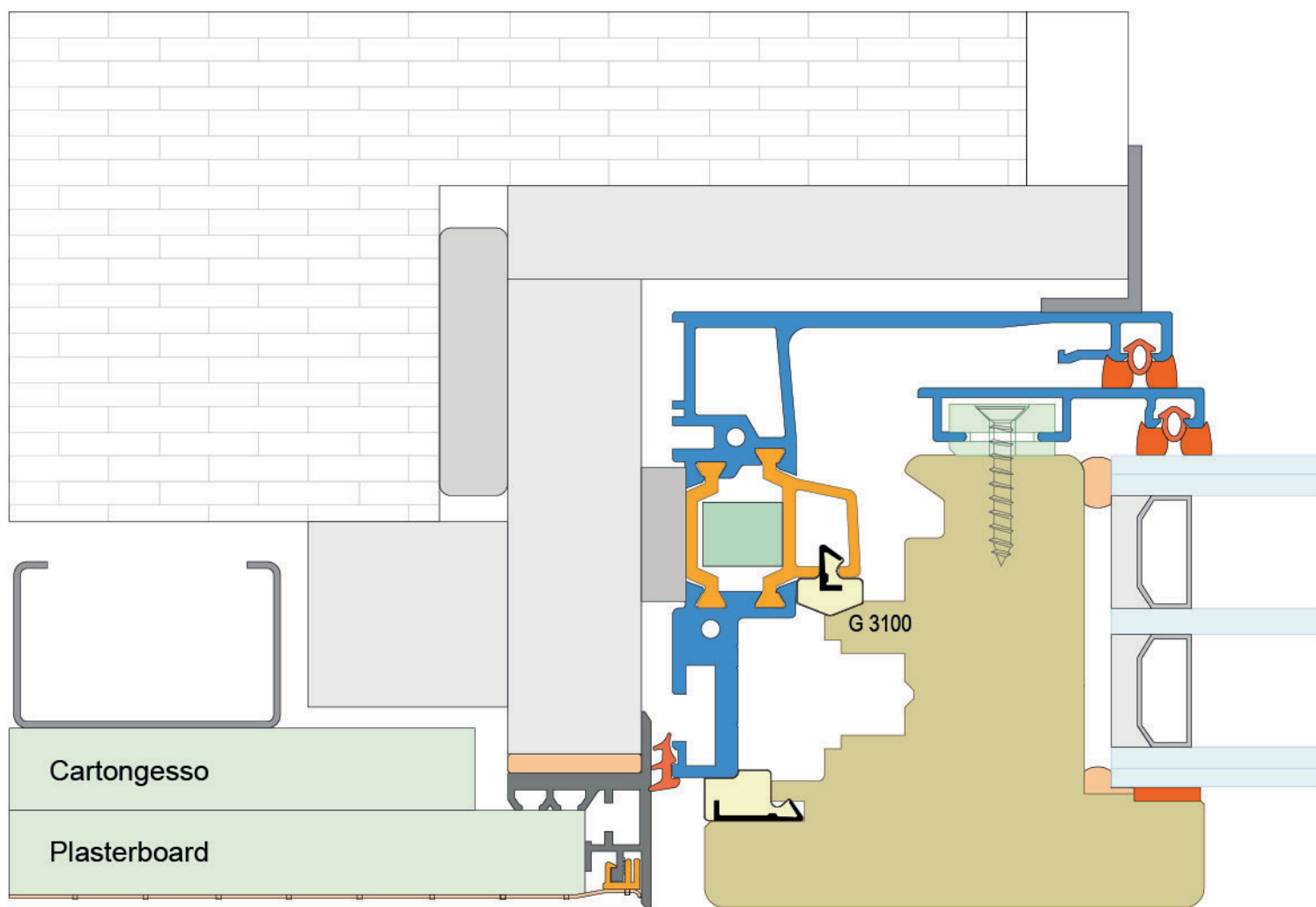


Accoppiamento finestra - finestra
Pairing window - window

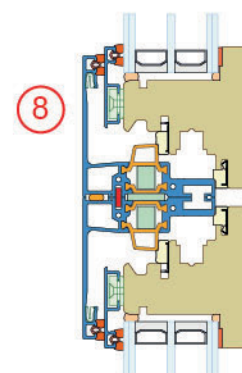
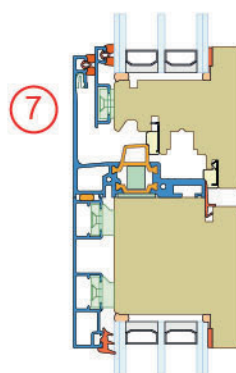
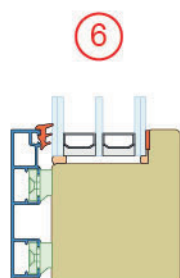
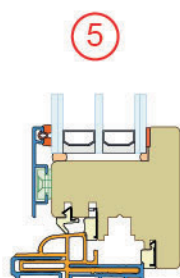
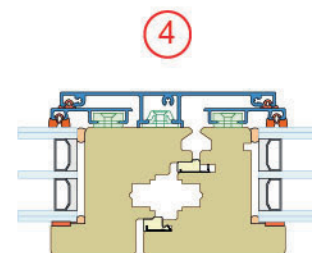
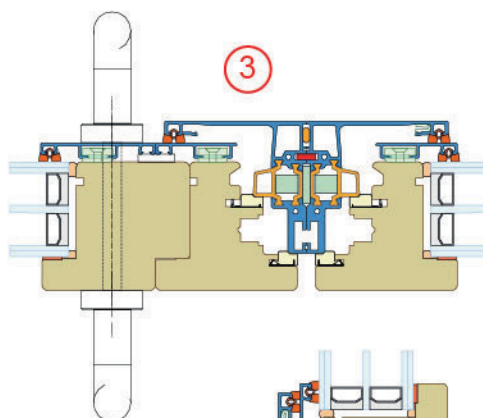
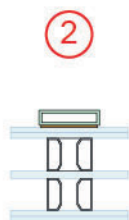
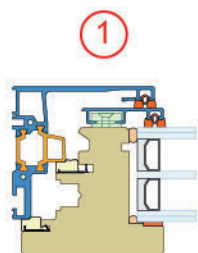
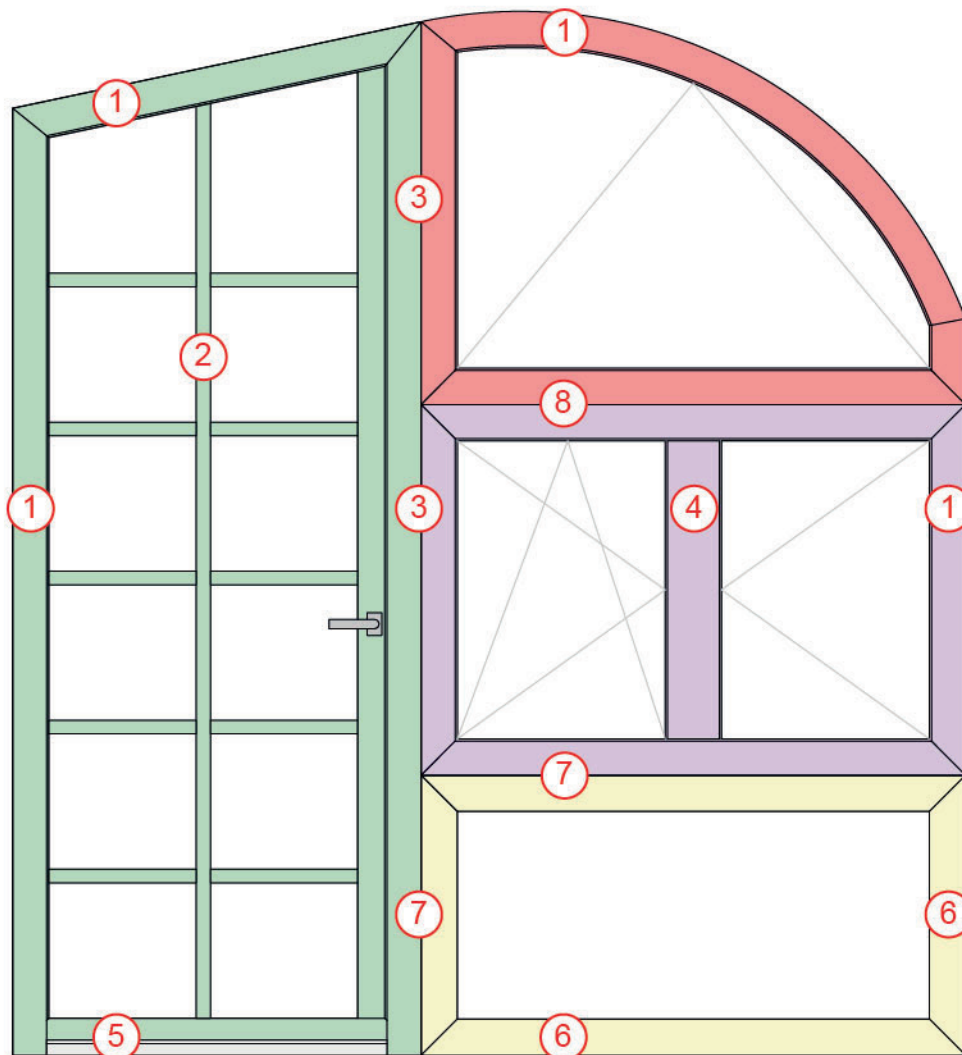


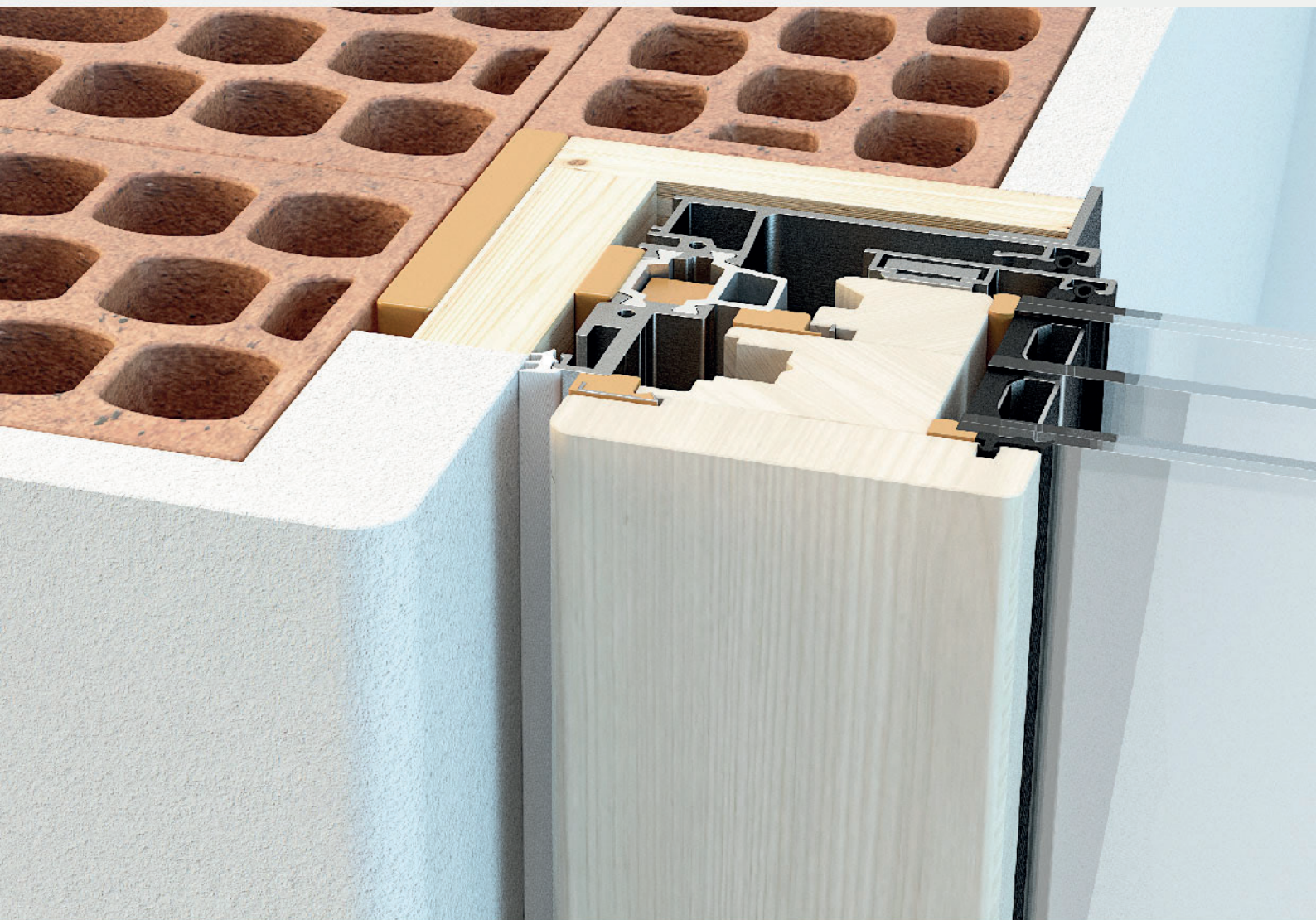
Accoppiamento finestra - telaio fisso
Pairing window - fixed frame





Mix è un sistema modulare con cui è possibile realizzare svariate geometrie di infisso (rettangoli, trapezi, triangoli, archi).
Mix is a modular system and it is possible to make various geometries of frame (rectangles, trapezoids, triangles, arcs).





Un tocco di classe per le finestre a centro muro
The smart solution when the window is set in the middle of a wall

- Telaio infisso a scomparsa
Invisible window frame
- Telaio infisso removibile
Removable window frame
- Ingombro contenuto
Limited space required
- Nessun utensile dedicato - Profilatura anta standard
No special tool required - The geometry is standard



CE marking available
by **cascading**