

SEMPLIFICA
Simplifies

VELOCIZZA
Fast production and installation

E' COMPATTO
Compact

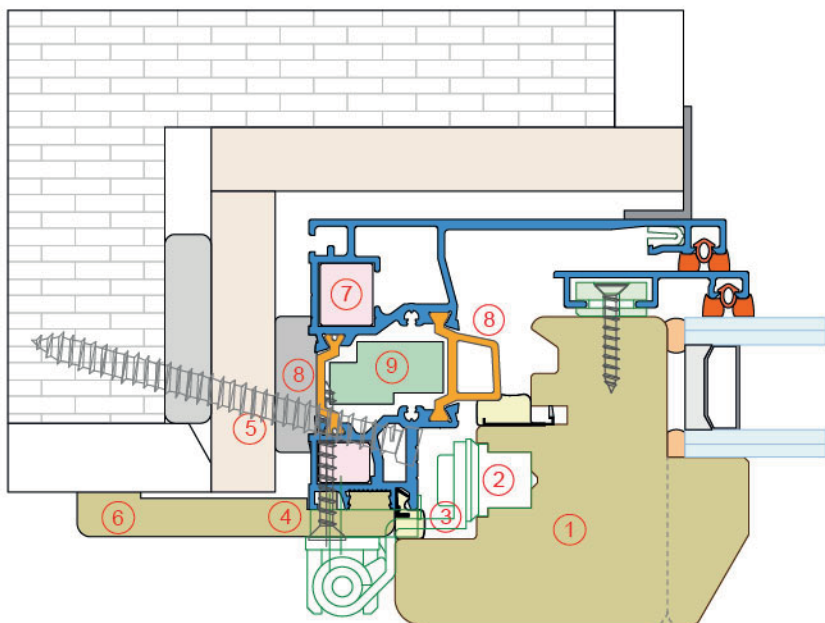
E' MODULARE
Modular

L'evoluzione dei sistemi legno-alluminio *The evolution of the wood-aluminum systems*

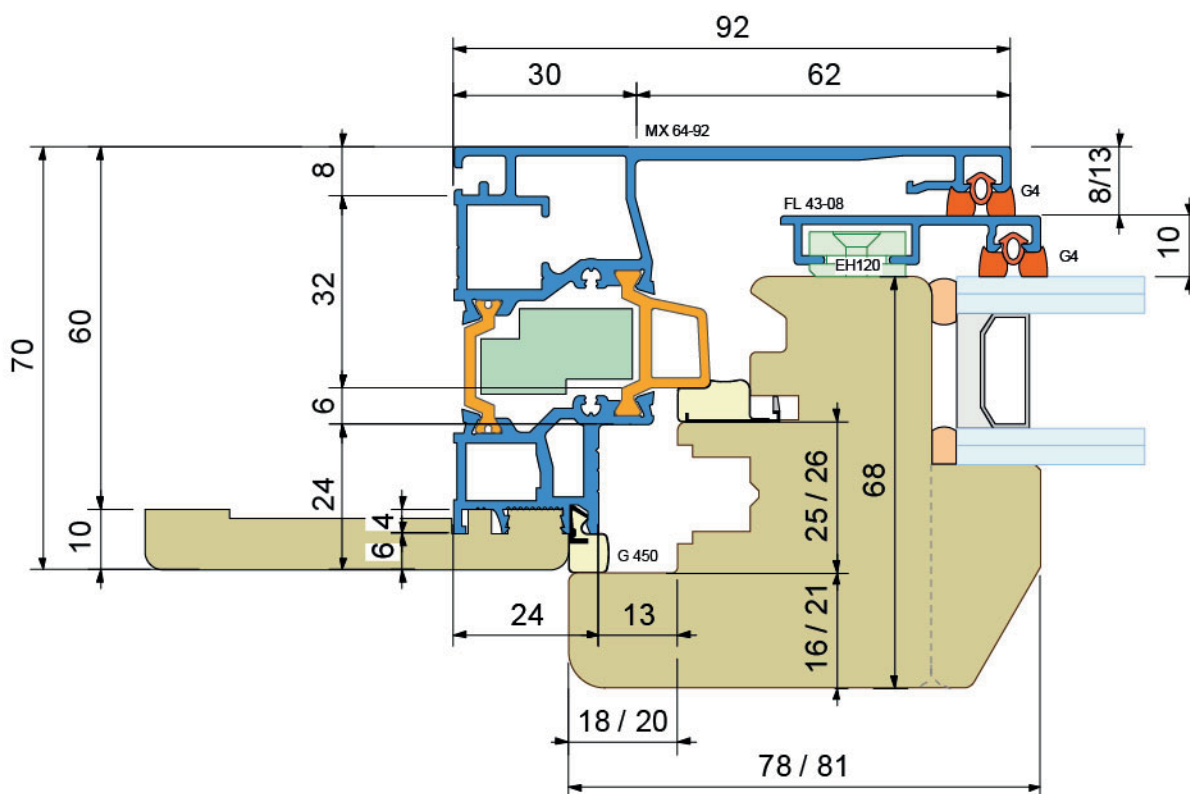
- Il profilo telaio ha funzione strutturale e di rivestimento
The frame profile has a structural and coverage functions
- Semplifica e velocizza la produzione e l'installazione
Simplifies and speeds up production and installation
- Compatibile con ferramenta standard per infissi in legno
Compatible with standard hardware for wooden windows
- Ingombro contenuto
Limited space required
- Nessun utensile dedicato - Profilatura anta standard
No special tool required - The geometry is standard



CE marking available
by **cascading**



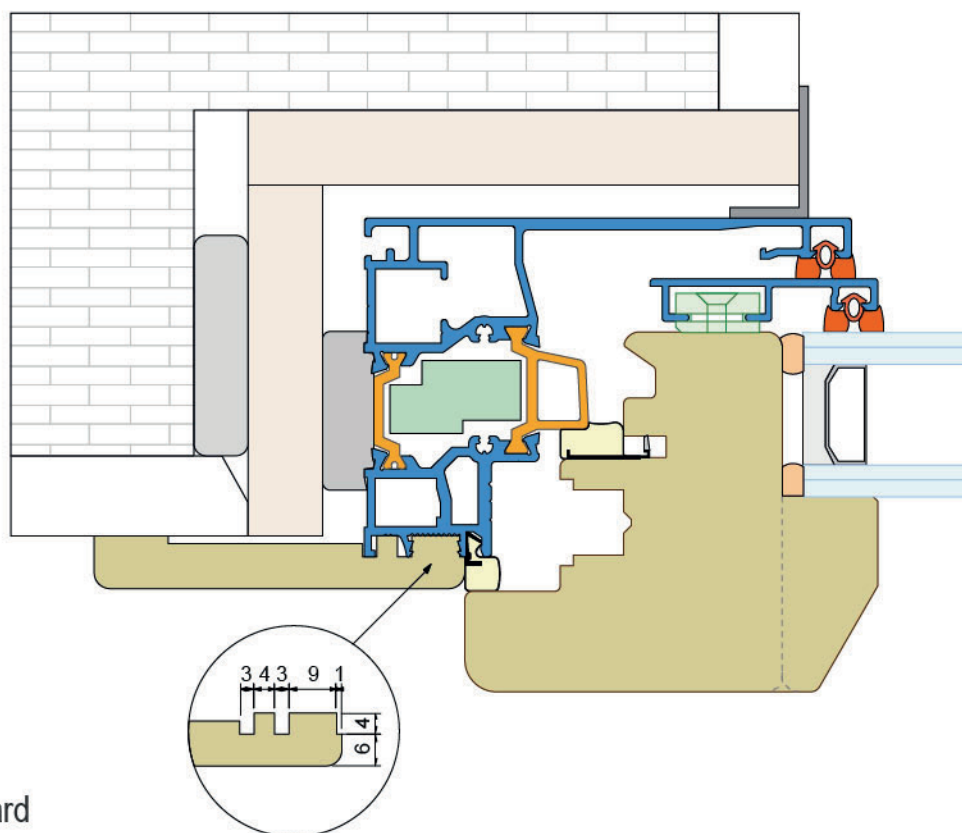
- ① Profilatura anta standard
No special tool required
- ② Ferramenta standard o a scomparsa asse 13
Standard or concealed hardware axis 13
- ③ Alloggiamento guarnizione acustica nel telaio
The acoustic gasket is placed in the frame
- ④ Fissaggio ferramenta con viti autofilettanti
The hardware is fixed with self-tapping screws
- ⑤ Il profilo prevede l'alloggiamento della vite di fissaggio
The profile involves the insertion of fixing screw
- ⑥ Coprifilo standard spessore 10mm
Standard staff bead thickness 10mm
- ⑦ Assemblaggio rapido con quadrette a bottone
Corner joint with spring loaded buttons
- ⑧ Profili verniciabili in poliammide per un buon isolamento termico
Paintable polyamide profiles for good thermal insulation
- ⑨ Profili in PE per ottimizzare l'isolamento termico
PE profiles to maximize thermal insulation



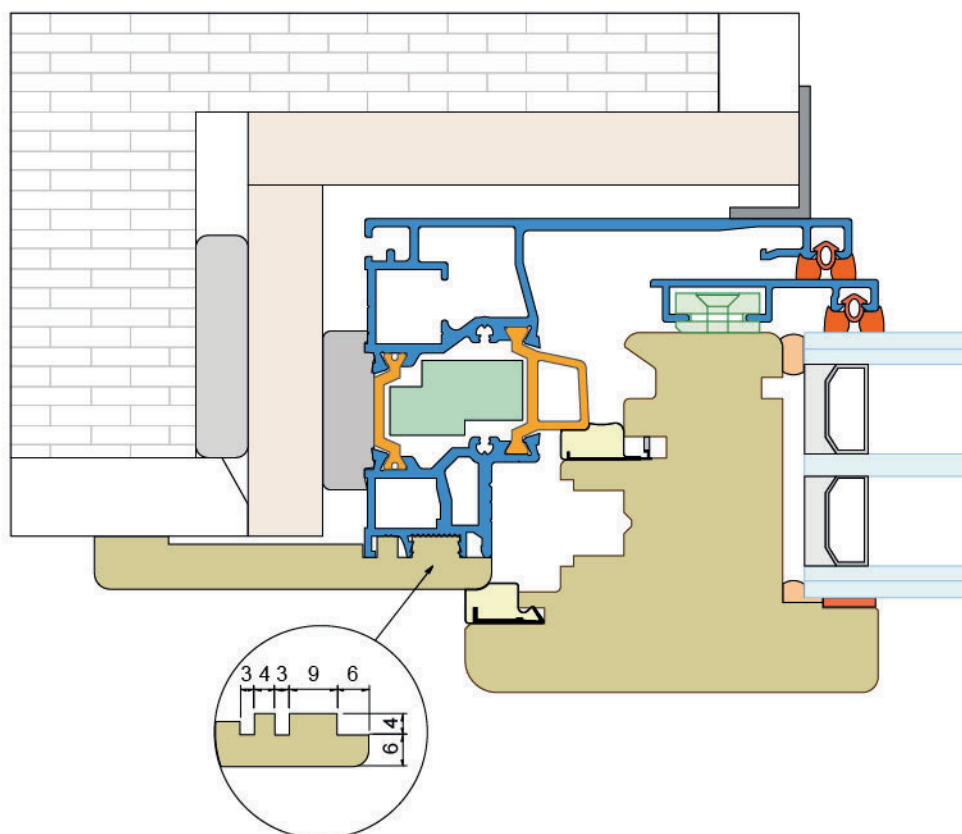
Performance

	Finestra <i>Window</i>	Portafinestra <i>French window</i>		Legno tenero <i>Soft wood</i>	Legno duro <i>Hard wood</i>
Permeabilità all'aria <i>Air permeability</i>	4	4	Isolamento termico <i>Thermal insulation</i> Uf [W/m ² K]	1,33	1,57
Tenuta all'acqua <i>Water tightness</i>	9A	8A			
Resistenza al vento <i>Resistance to wind</i>	C5	C4			

Con coprifilo standard - Guarnizione acustica nel telaio
With standard staff bead - The acoustic gasket is placed in the frame

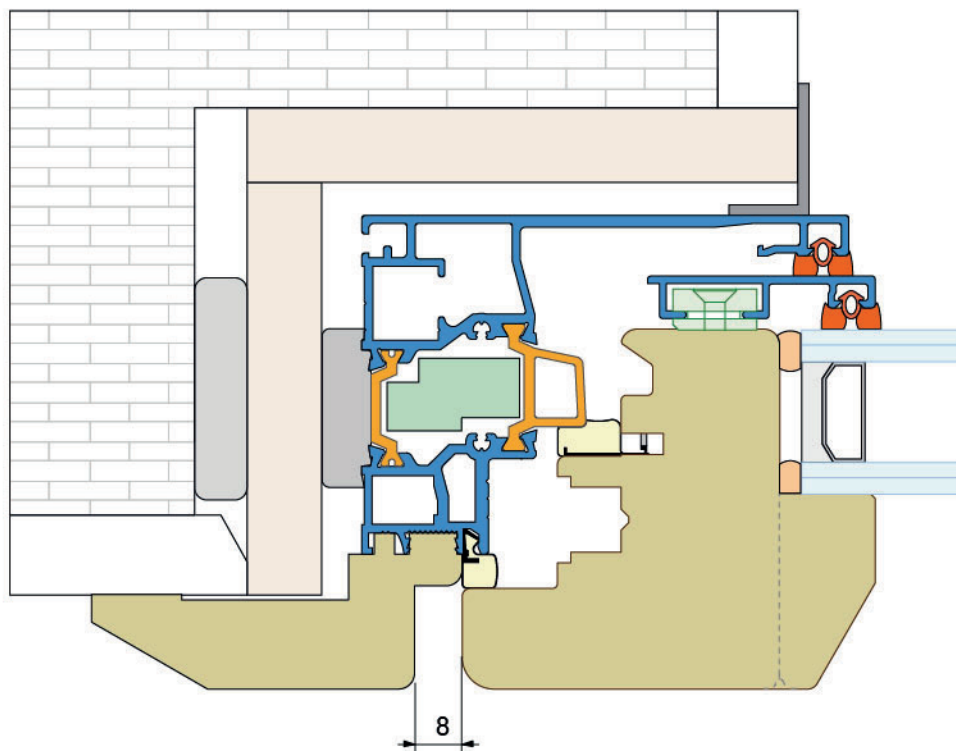


Con coprifilo standard
With standard staff bead



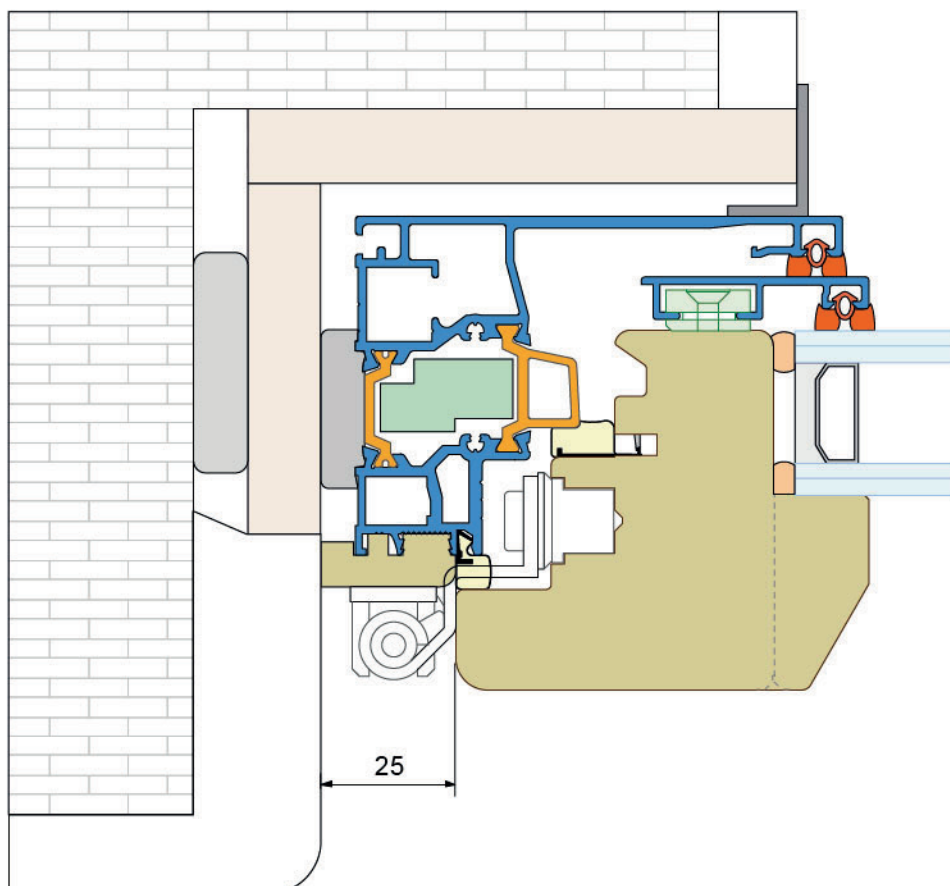
Anta complanare al coprifilo

The wing of the window is coplanar with the staff bead



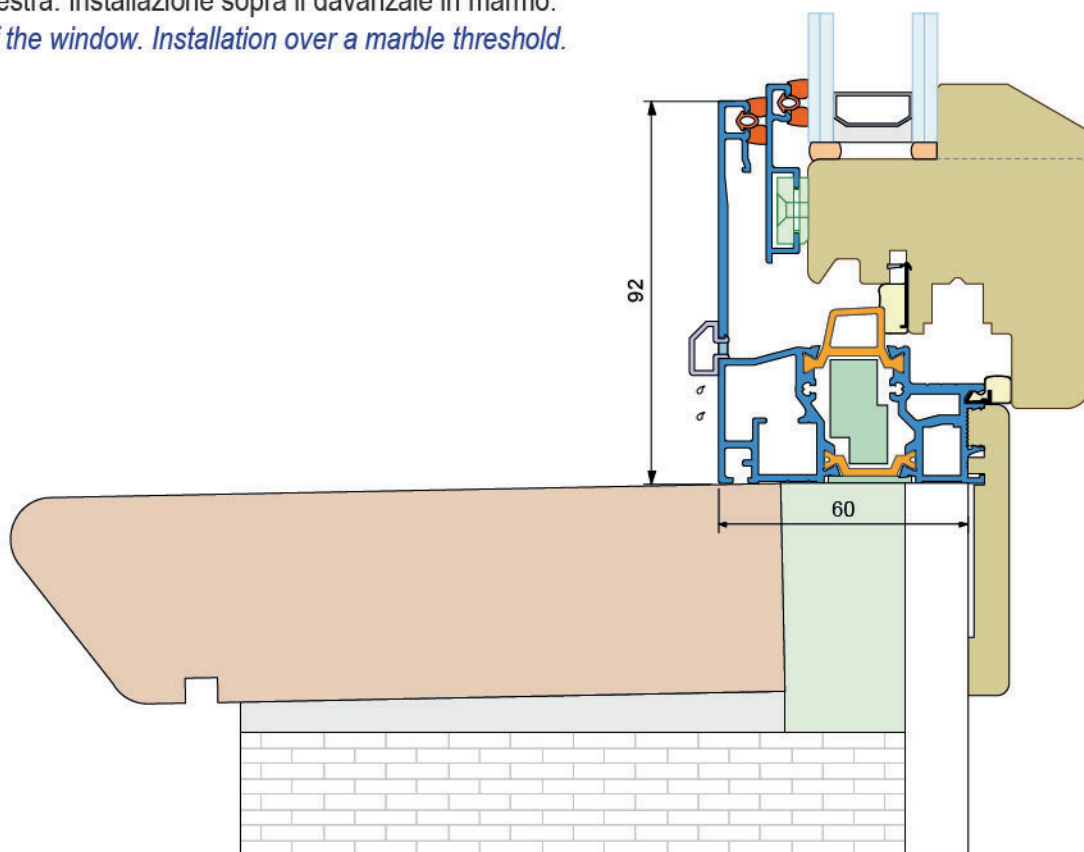
Installazione a centro muro

Half wall installation

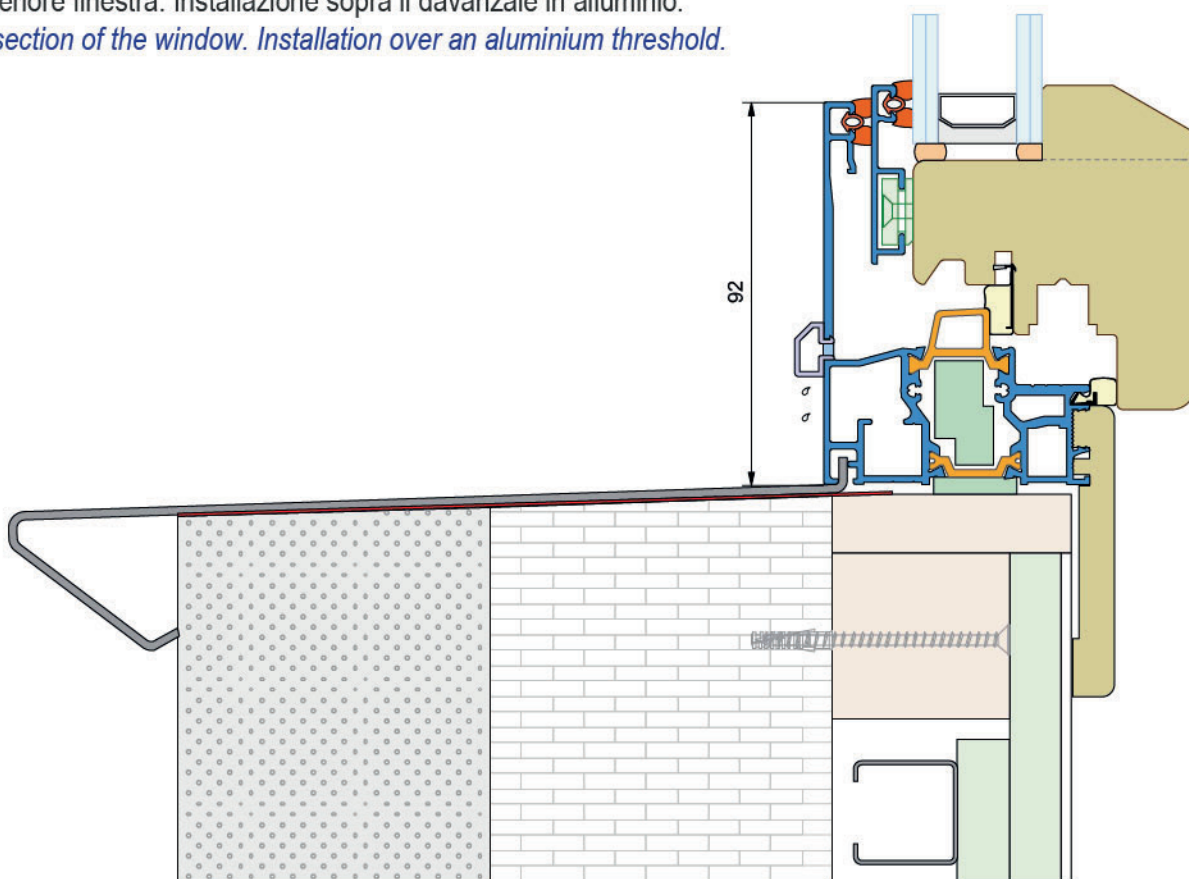


Nodo inferiore finestra
Bottom section of the window

Nodo inferiore finestra. Installazione sopra il davanzale in marmo.
Bottom section of the window. Installation over a marble threshold.

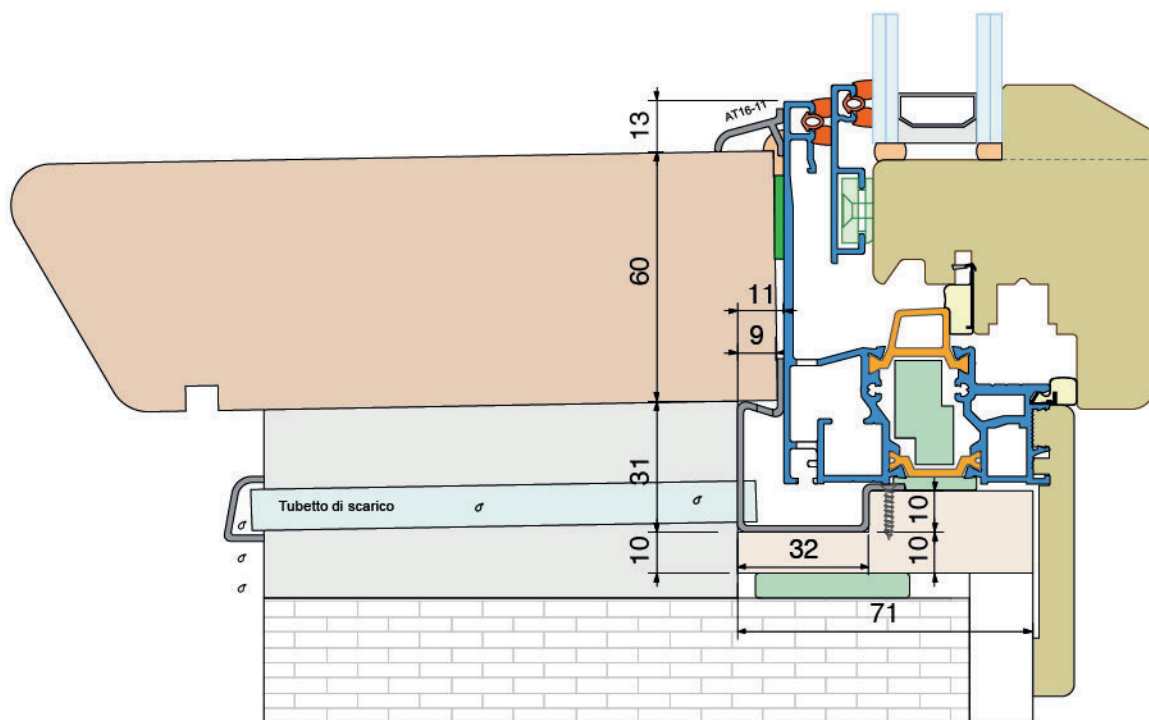


Nodo inferiore finestra. Installazione sopra il davanzale in alluminio.
Bottom section of the window. Installation over an aluminium threshold.

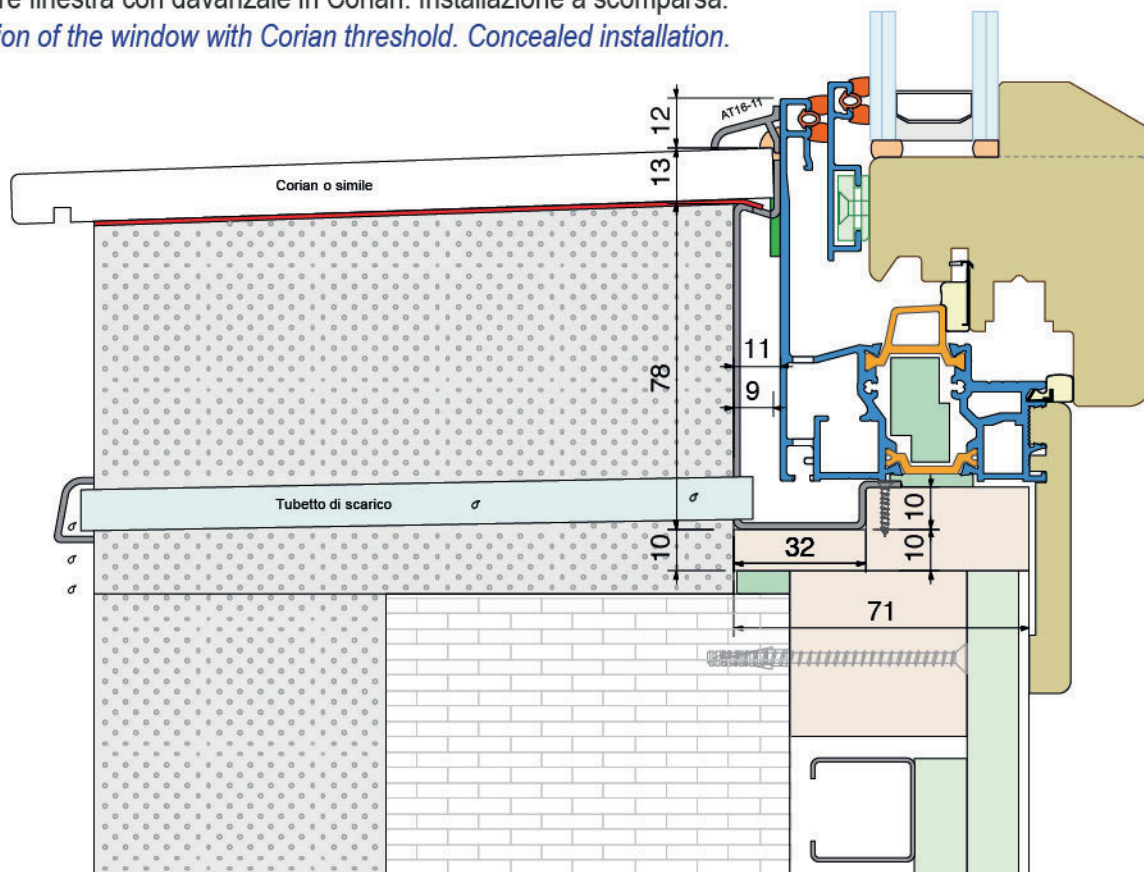


Nodo inferiore finestra Bottom section of the window

Nodo inferiore finestra con davanzale in marmo. Installazione a scomparsa.
Bottom section of the window with marble threshold. Concealed installation.

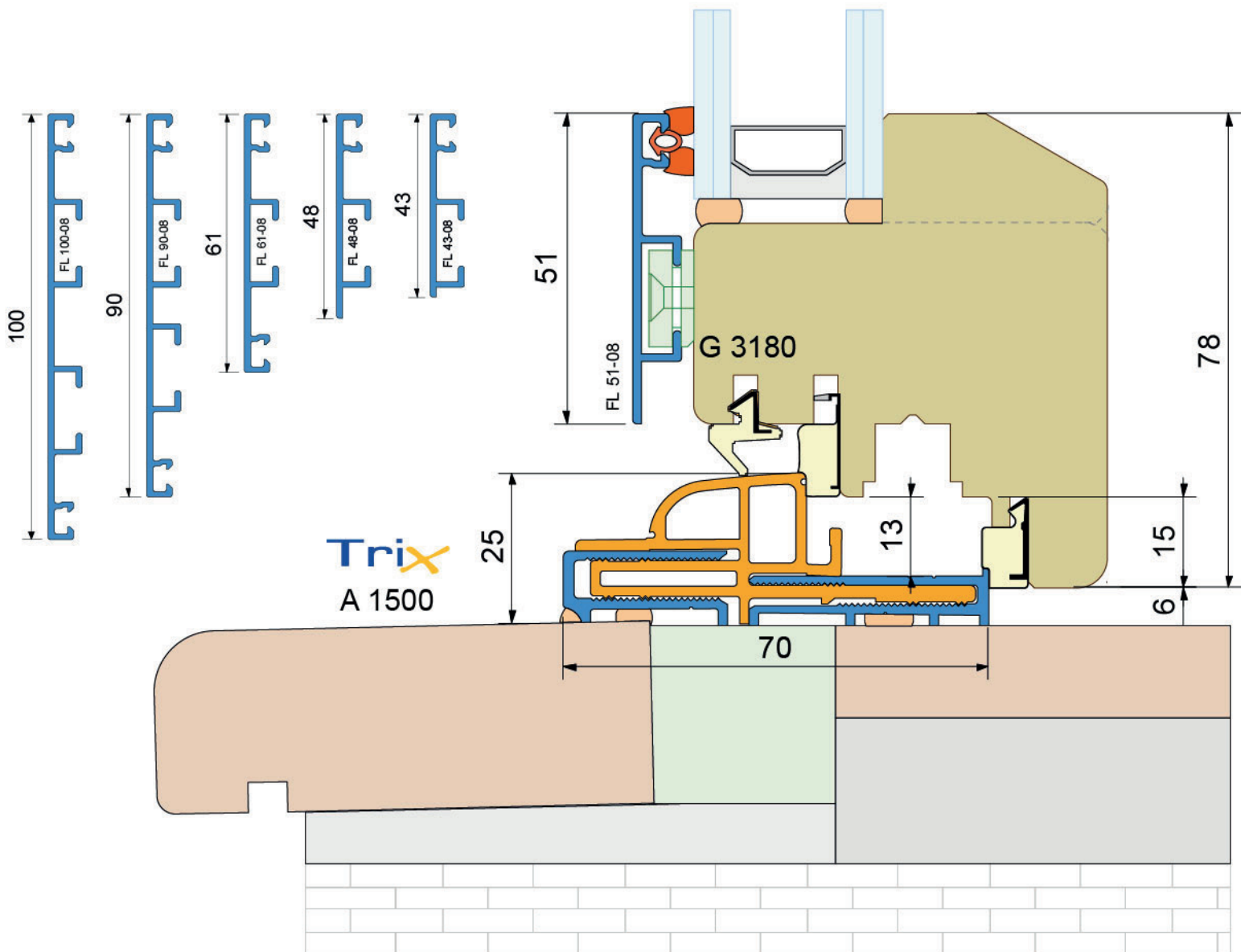
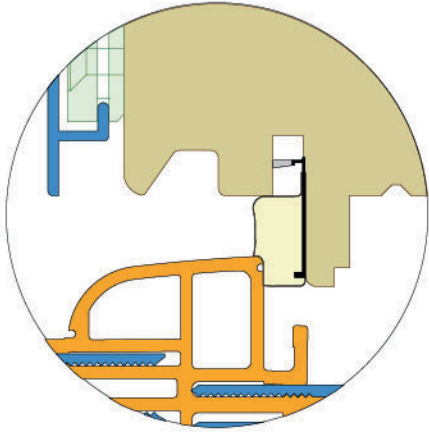
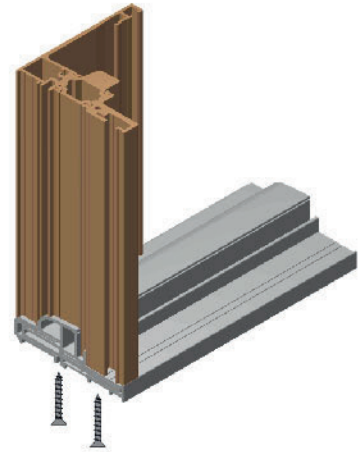


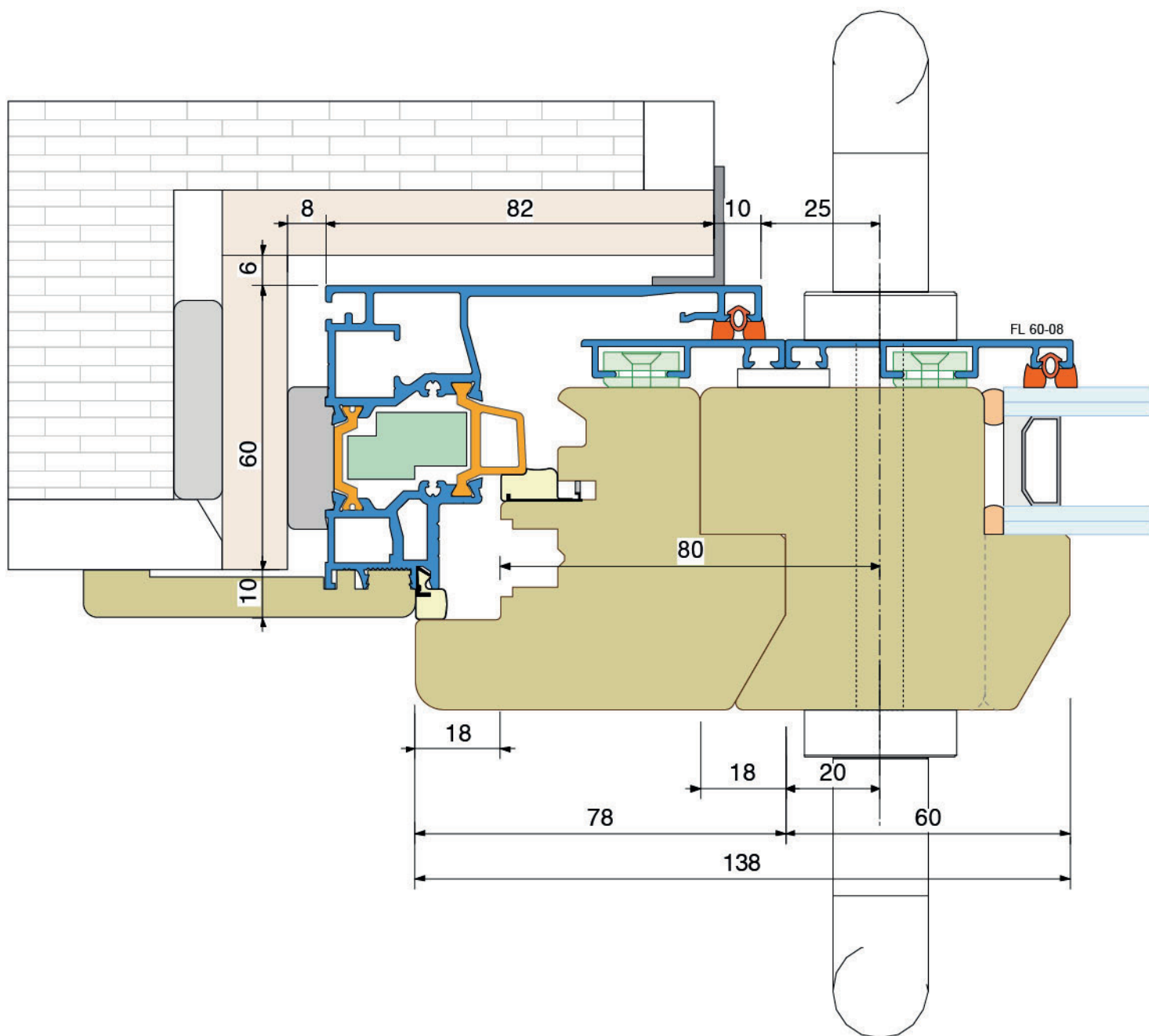
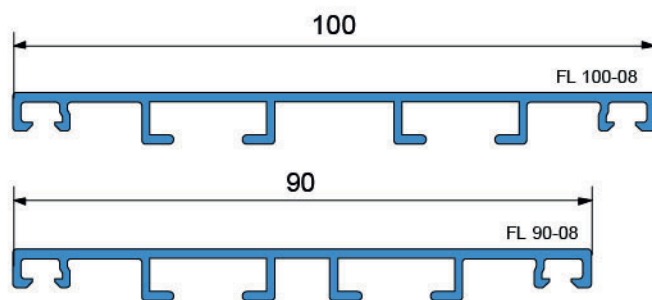
Nodo inferiore finestra con davanzale in Corian. Installazione a scomparsa.
Bottom section of the window with Corian threshold. Concealed installation.

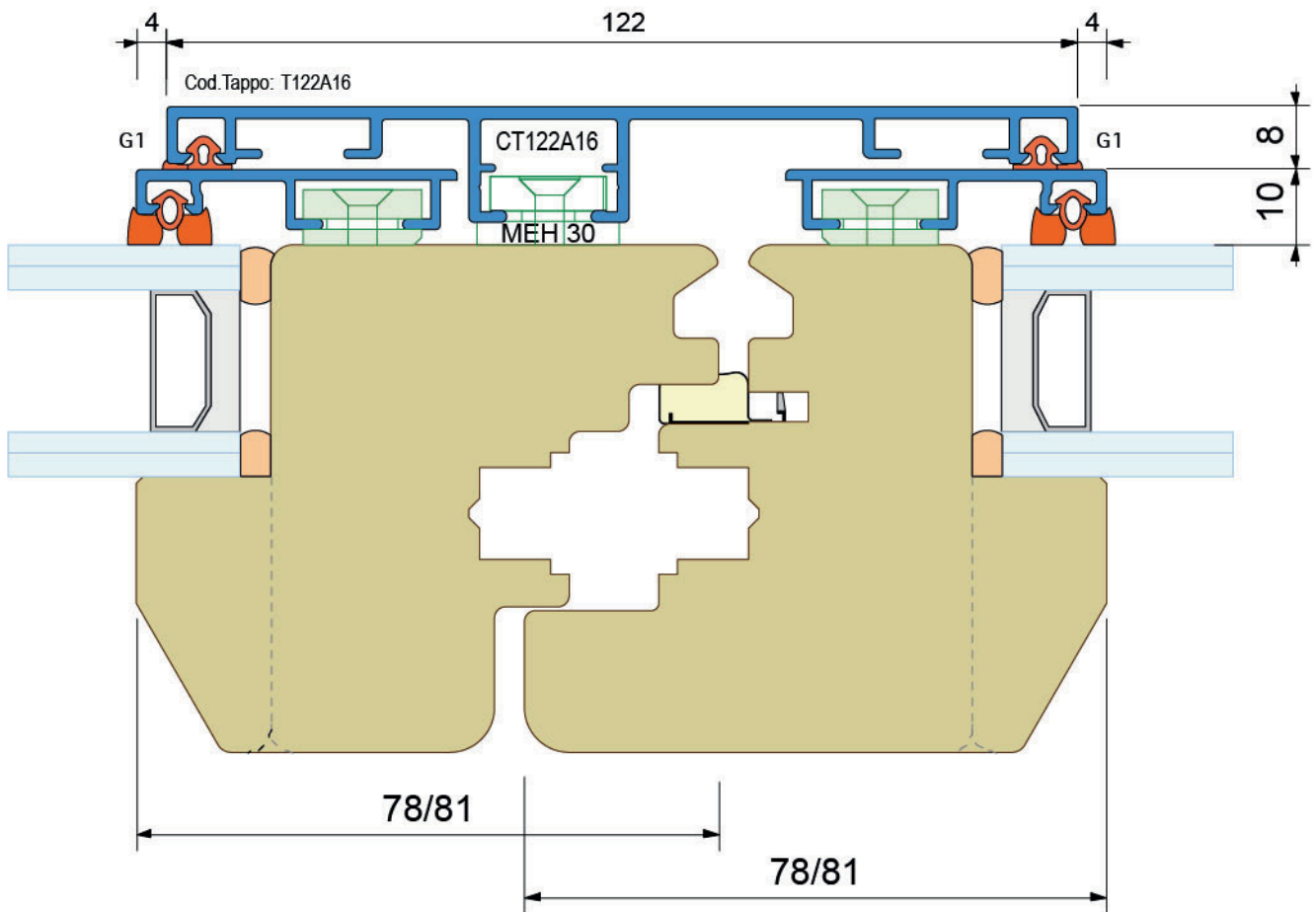


Nodo inferiore portafinestra
Bottom section of french door

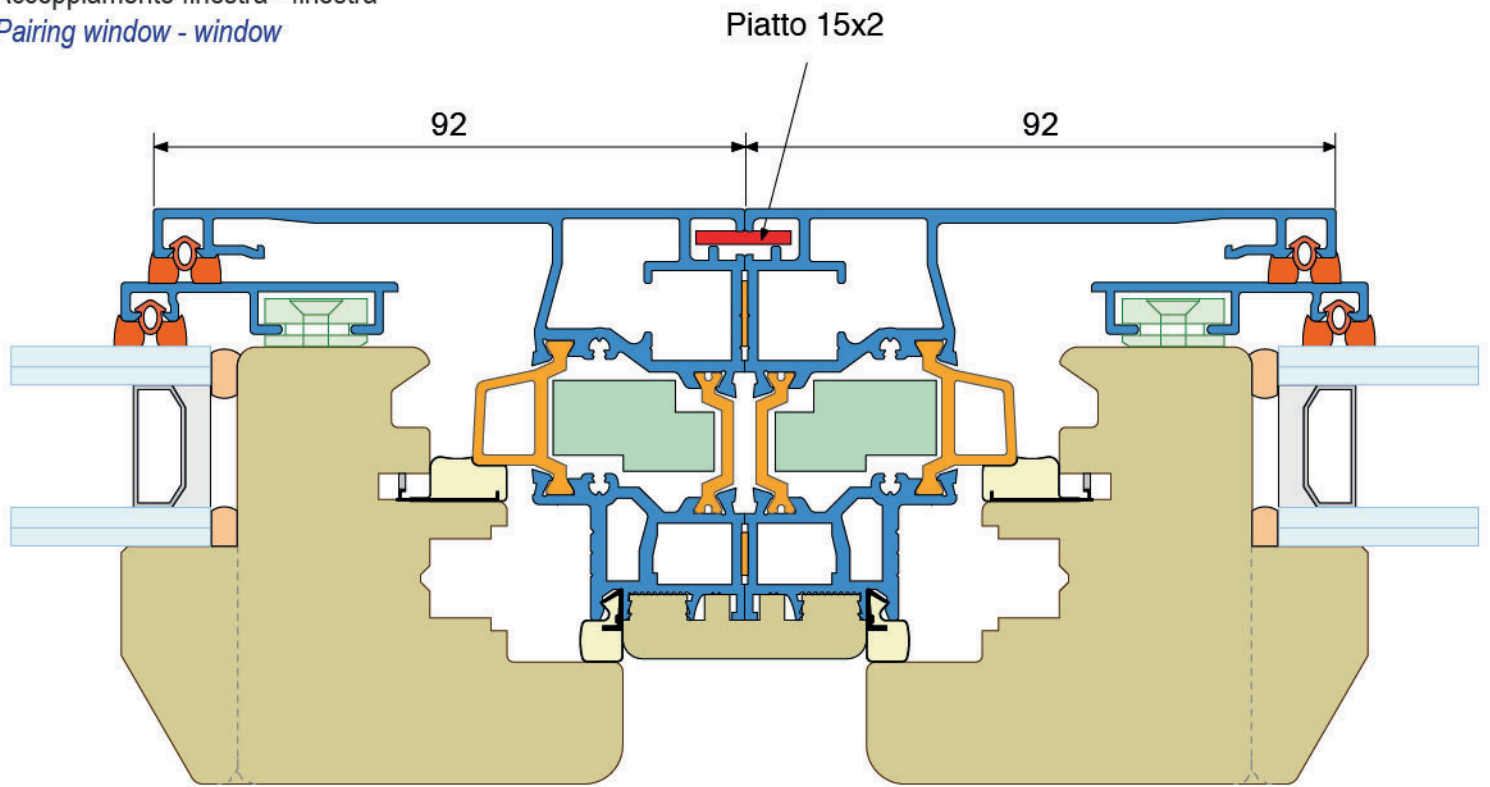
Soluzione senza guarnizione aggiuntiva
Solution without added seal
 Tenuta all'acqua *Water tightness = 6A*



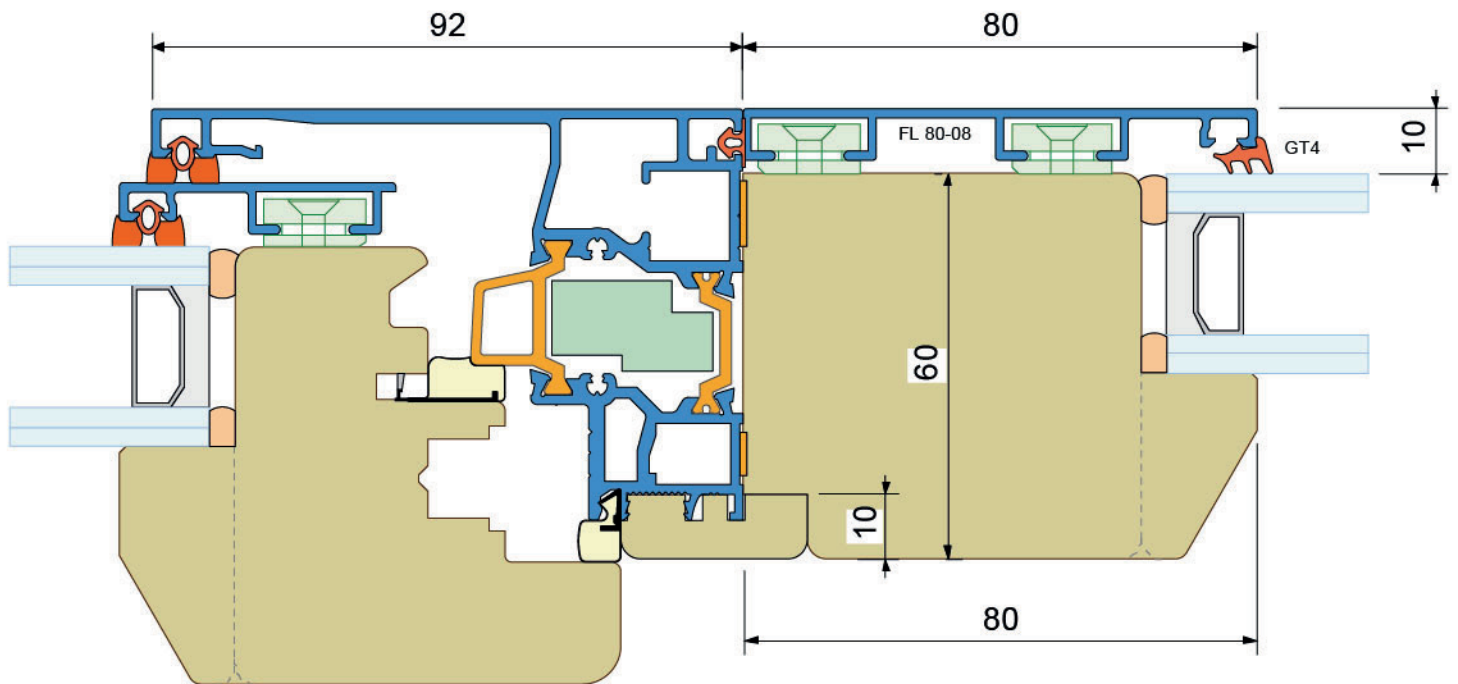


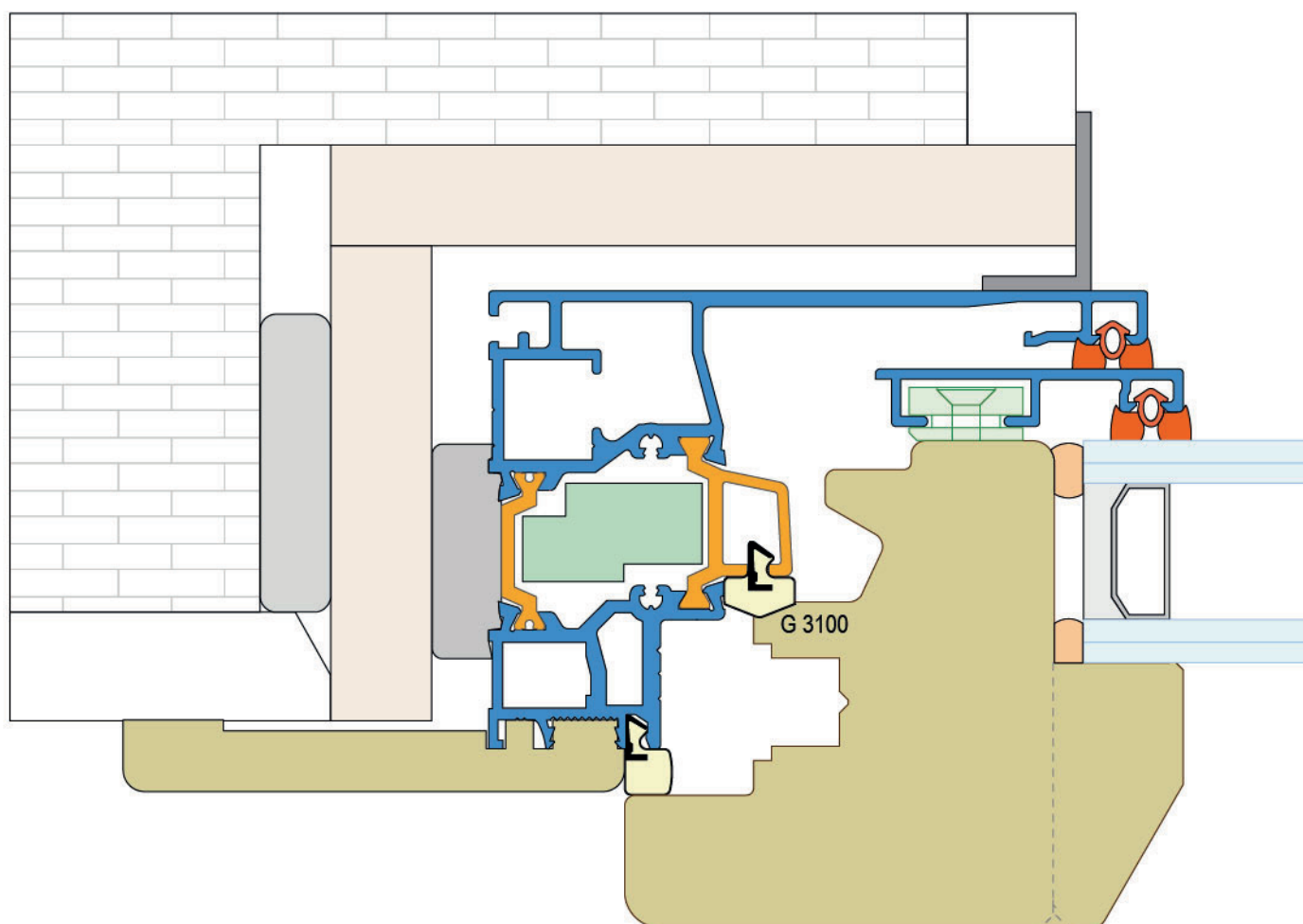


Accoppiamento finestra - finestra
Pairing window - window



Accoppiamento finestra - telaio fisso
Pairing window - fixed frame





Mix è un sistema modulare con cui è possibile realizzare svariate geometrie di infisso (rettangoli, trapezi, triangoli, archi).
Mix is a modular system and it is possible to make various geometries of frame (rectangles, trapezoids, triangles, arcs).

